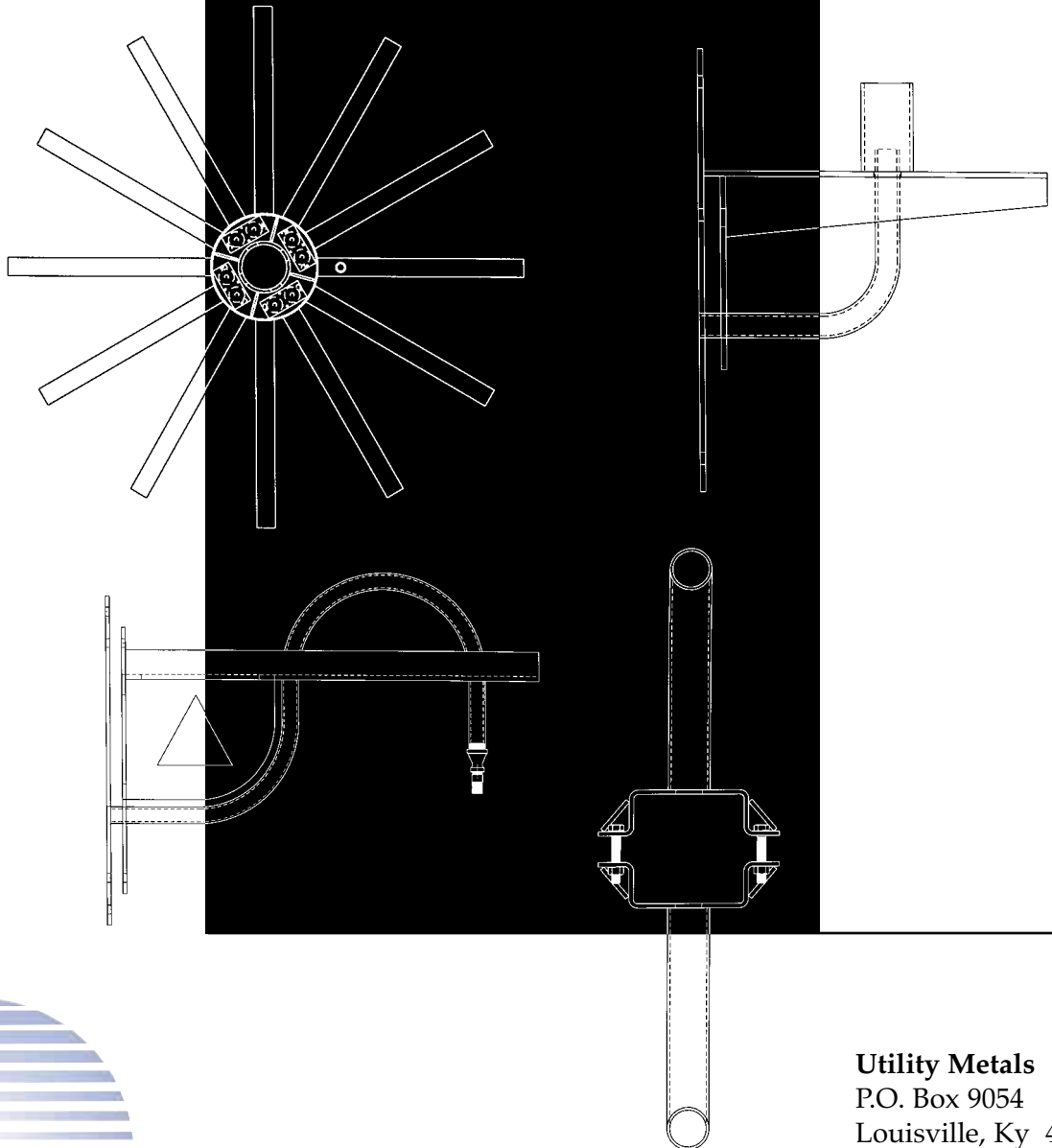




# CUSTOM FABRICATION



**Utility Metals**  
P.O. Box 9054  
Louisville, Ky 40209

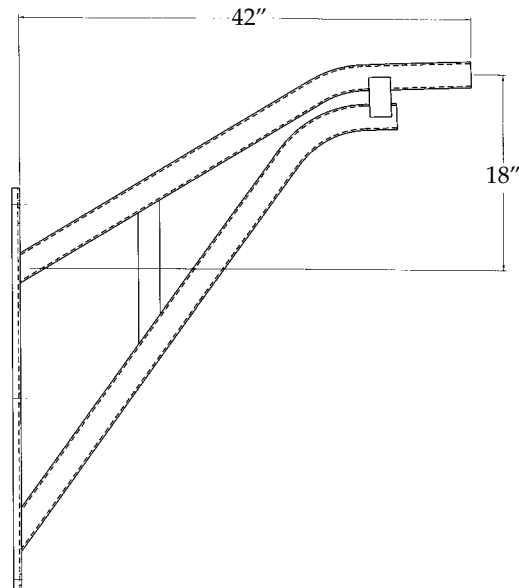
800-627-8276  
502-363-6681  
502-368-2656 FAX  
[www.utilitymetals.com](http://www.utilitymetals.com)

*A division of  
Fabricated Metals LLC*

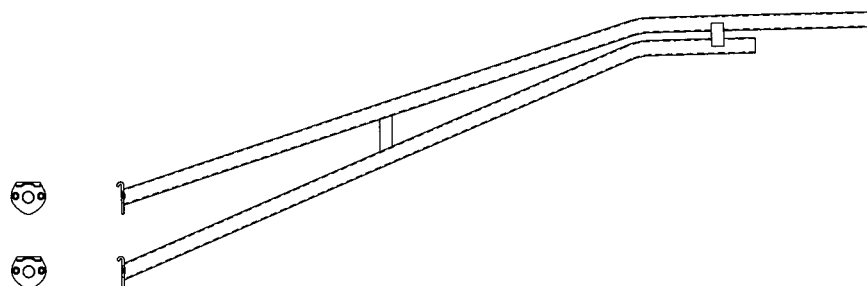
*Presented on the following pages are various custom products fabricated by Utility Metals. Our state-of-the-art design programs, drafting system and software allows us to meet your specifications. We provide solutions to your most complex applications with designs to meet your individual requirements.*

*Our knowledgeable sales staff, experienced work force, and innovative processes allow us to meet your needs on any size project.*

## TRUSS BRACKETS FOR SQUARE POLE MOUNTING

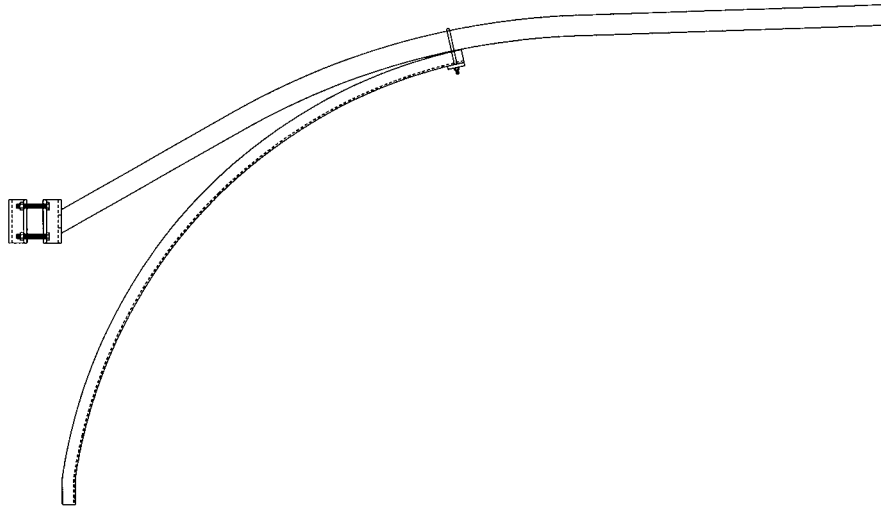


## TRUSS BRACKETS WITH SIMPLEX MOUNTING

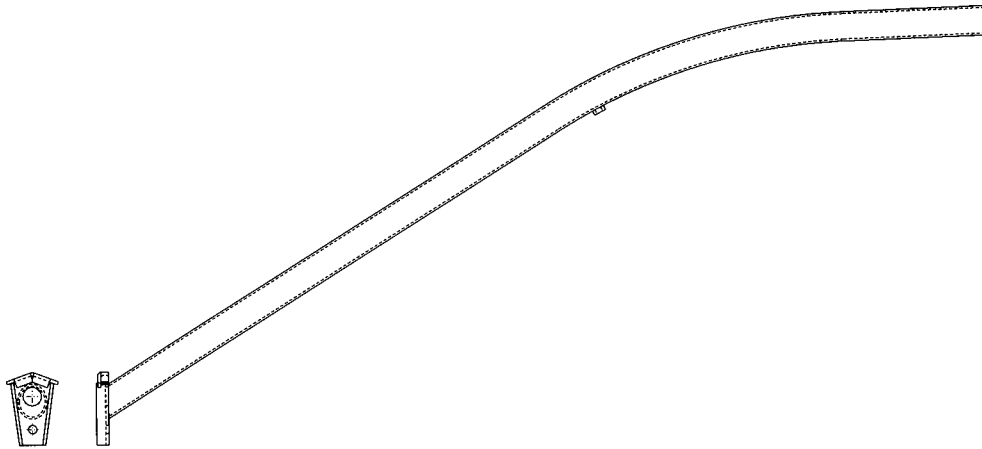


### UPSWEEP WRAP BRACKETS WITH UNDERBRACE

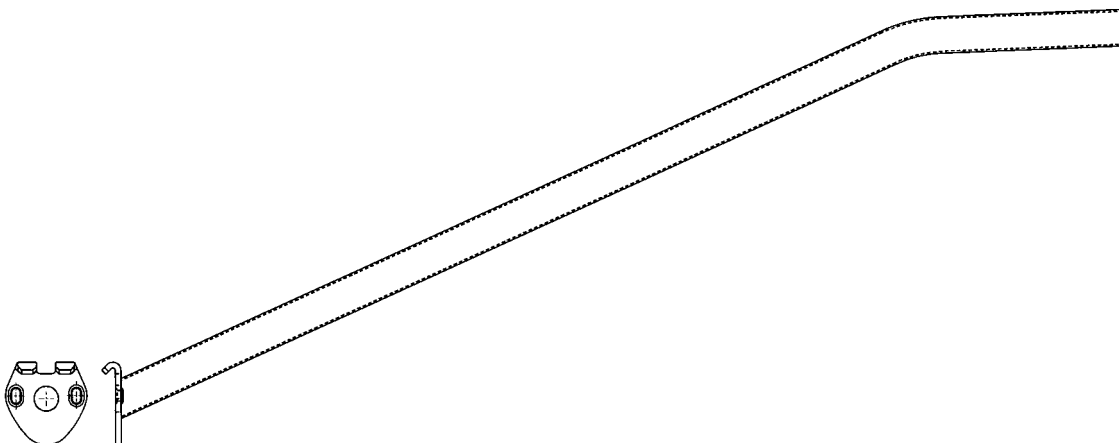
### FOR ROUND POLES

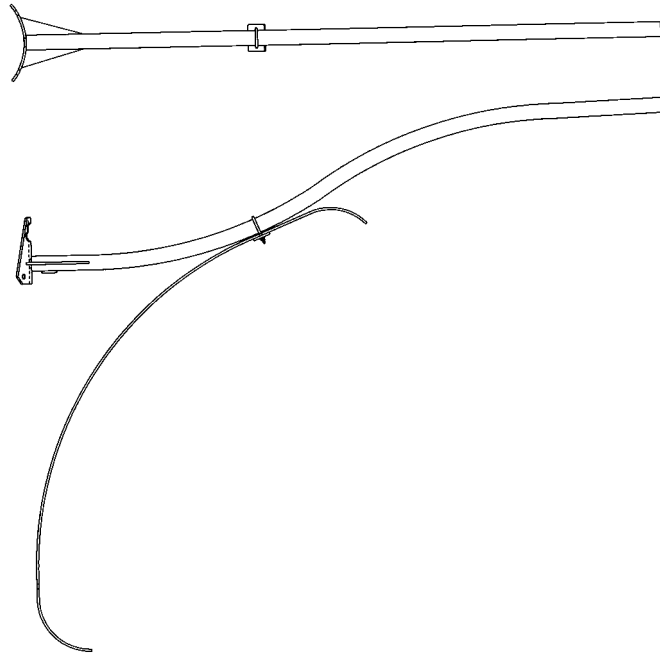
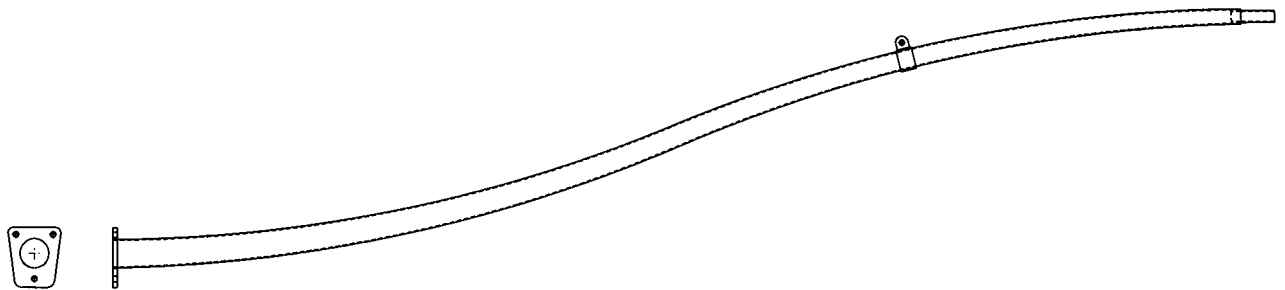
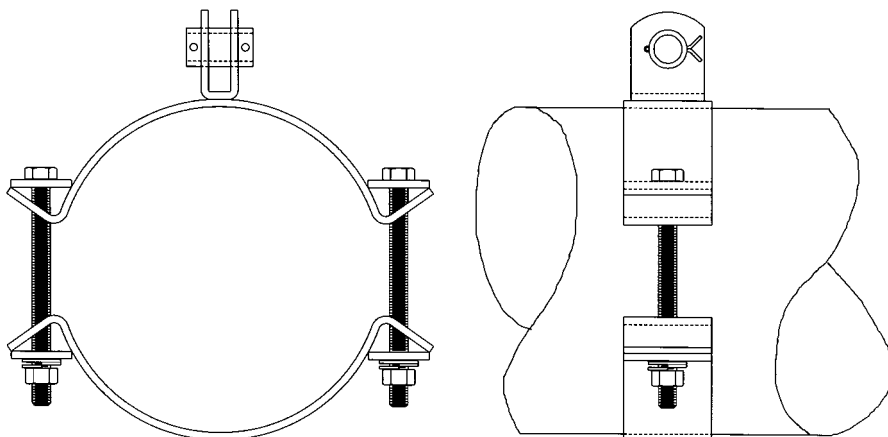


### UPSWEEP BRACKETS WITH SINGLE BOLT SIMPLEX



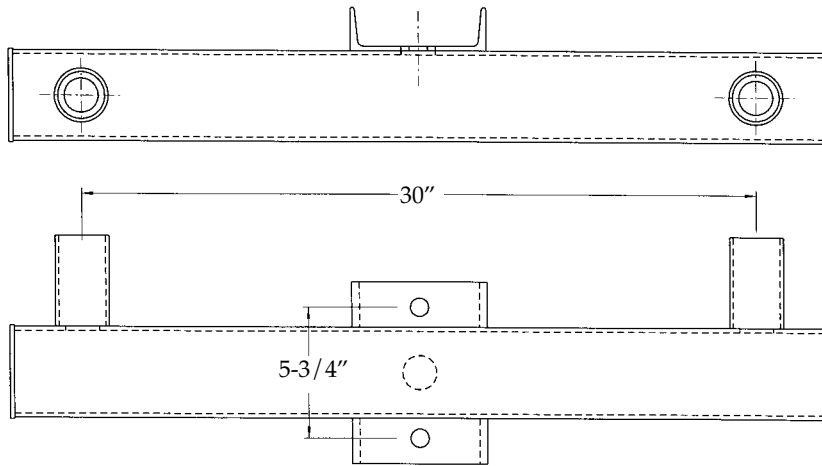
### CANTILEVER ARMS W/ 2-BOLT SIMPLEX BRACKET



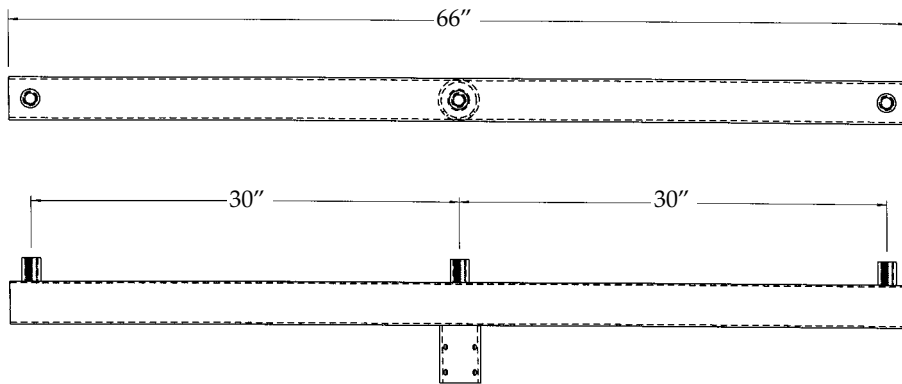
**DECORATIVE DOUBLE CURVE BRACKETS****FOR WOOD POLES****STEEL TAPERED ARMS****SPAN WIRE CLAMPS****FOR ROUND POLES**

# ROUND SQUARE ROUND BRACKETS

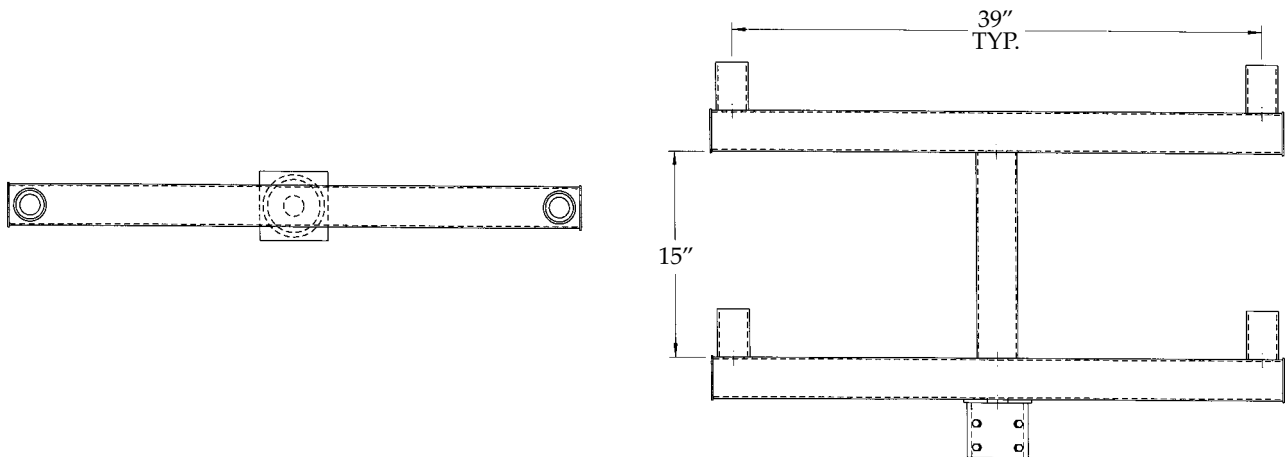
# FOR CONCRETE POLES



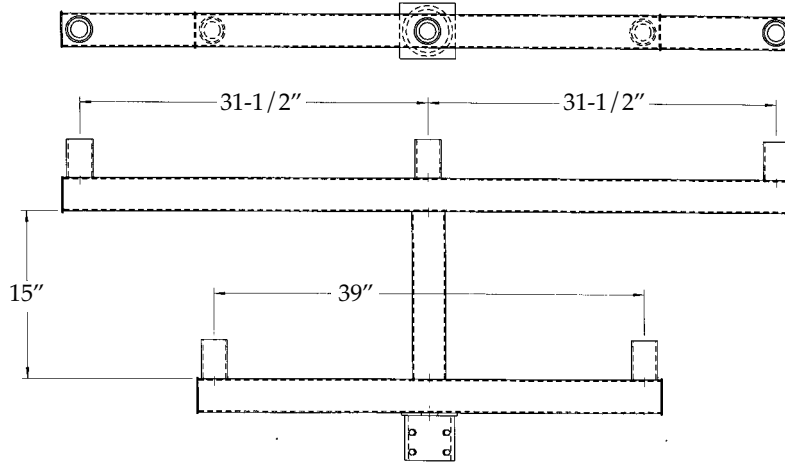
# ROUND SQUARE ROUND BRACKETS W/ COUPLINGS



# ROUND SQUARE ROUND RACK - FOUR FIXTURE

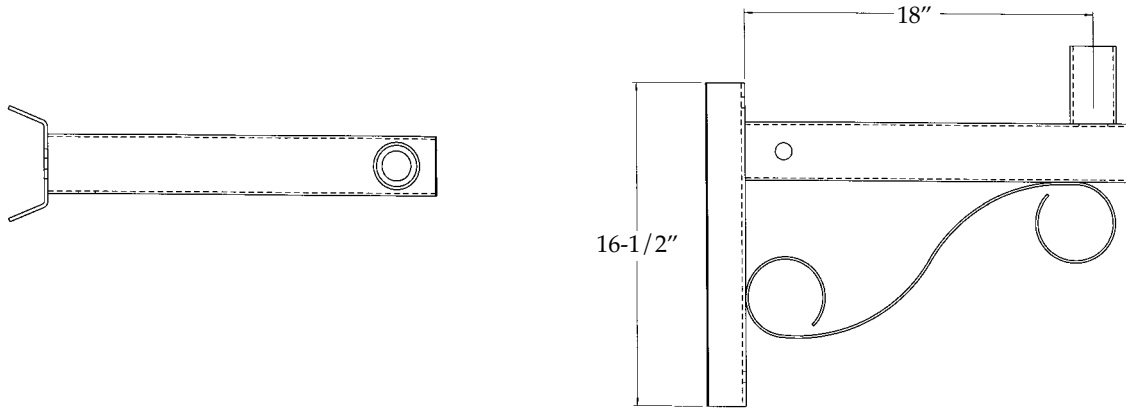


# ROUND SQUARE ROUND RACK – FIVE FIXTURE

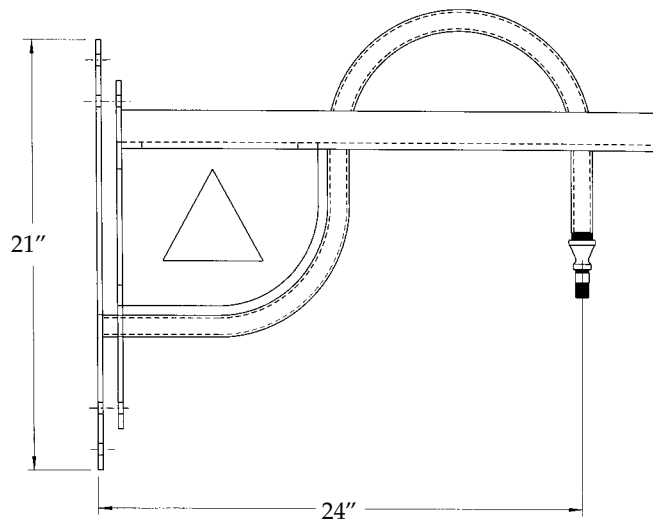


# SQUARE SIDE MOUNT BRACKETS WITH SCROLL

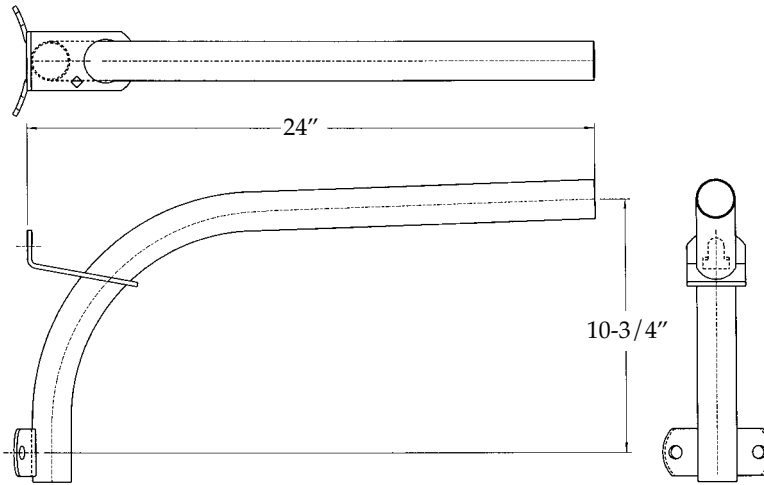
# FOR ROUND POLES



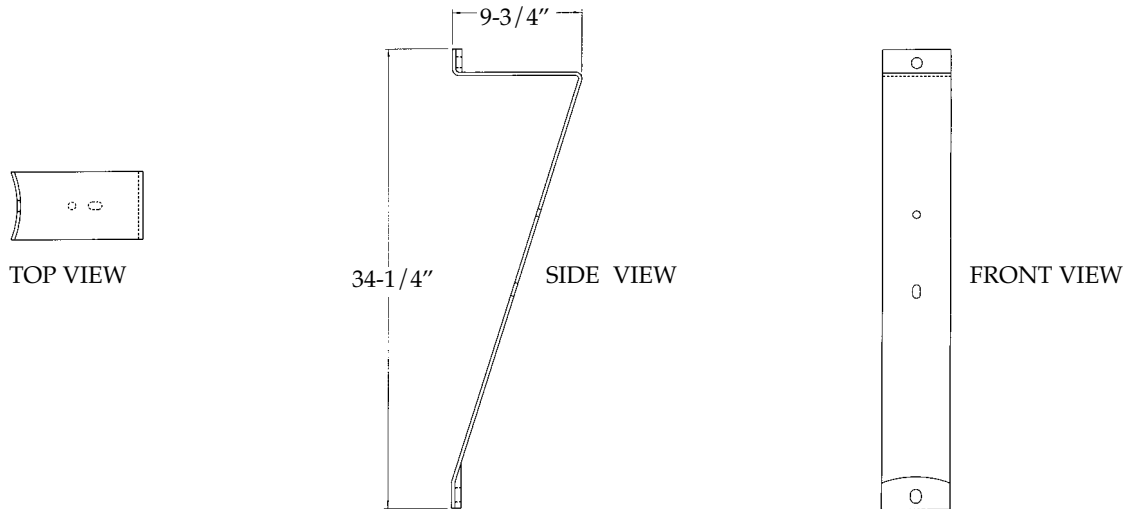
# DECORATIVE WALL MOUNT BRACKETS



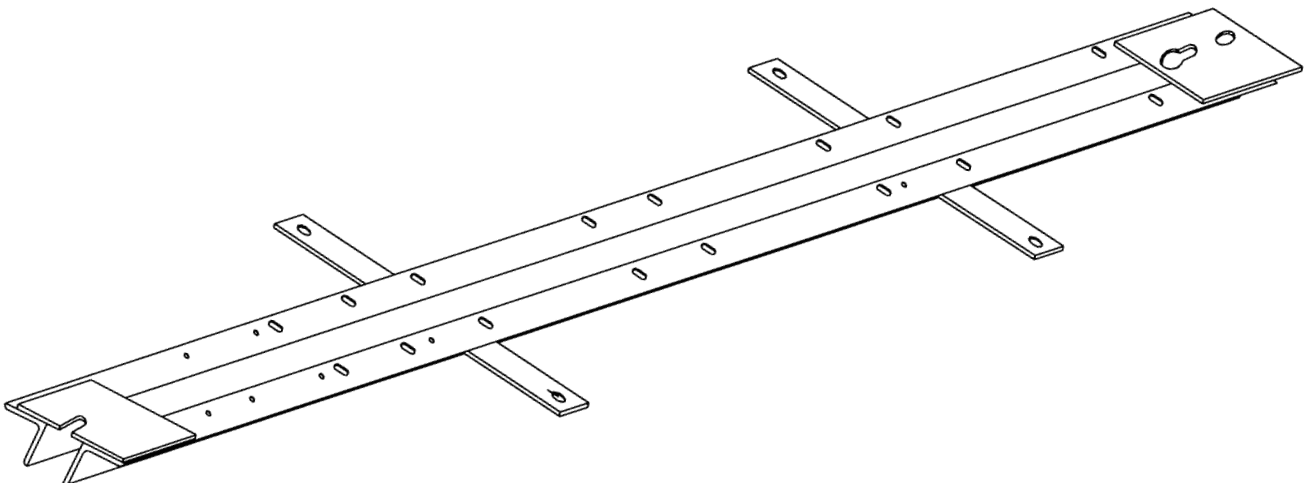
# WOOD POLE MOUNTING BRACKETS



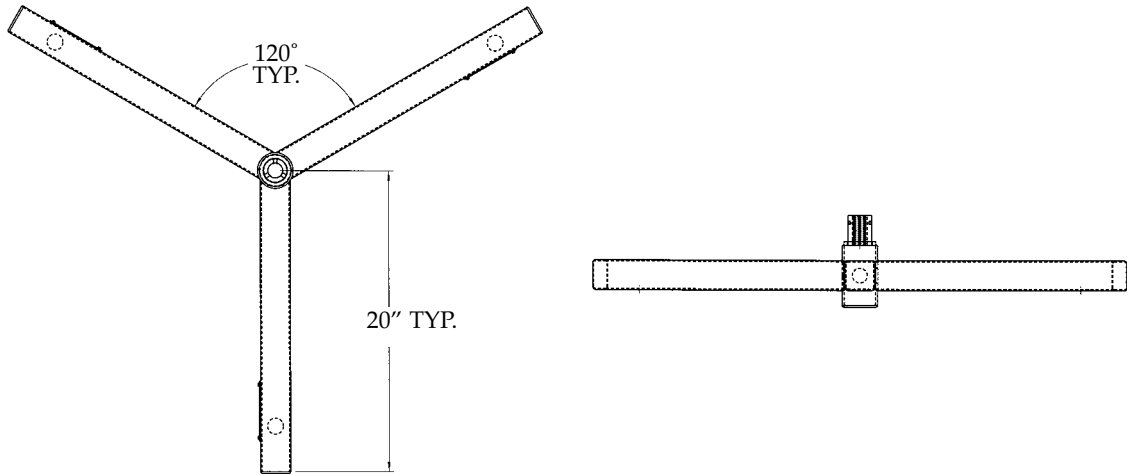
# VERTICAL MOUNTING BRACKETS



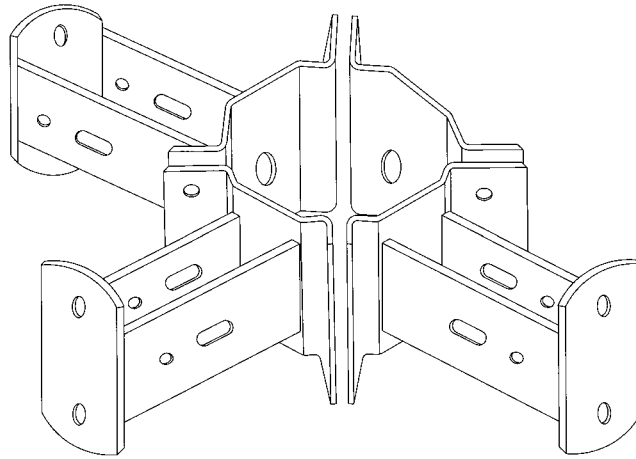
# ALUMINUM VERTICAL BRACKETS



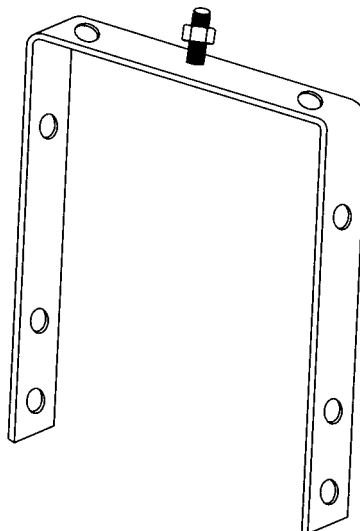
## ROUND SQUARE TENON BRACKETS



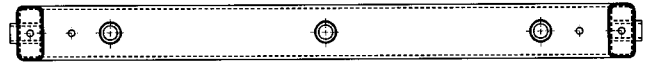
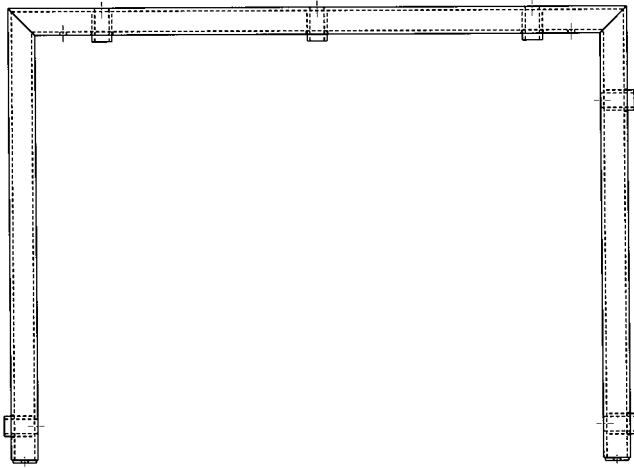
## TRANSFORMER MOUNTING BRACKETS



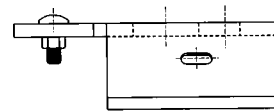
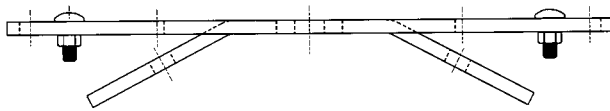
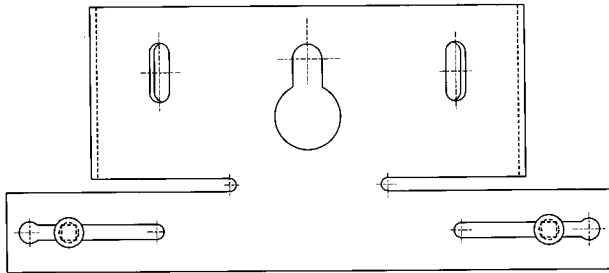
## CONDUIT STAND OFF BRACKETS



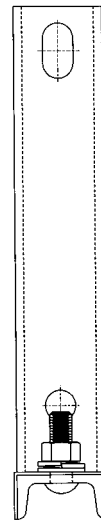
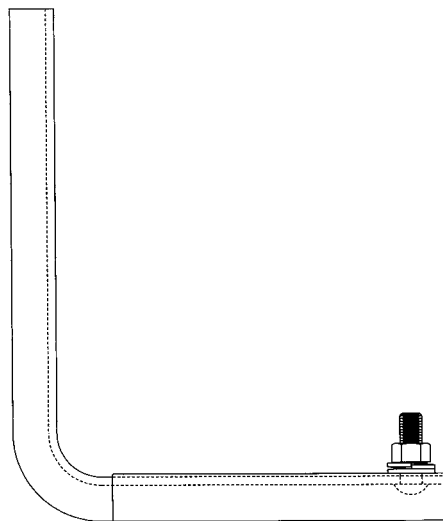
# MOUNTING YOKES FOR SPEAKERS



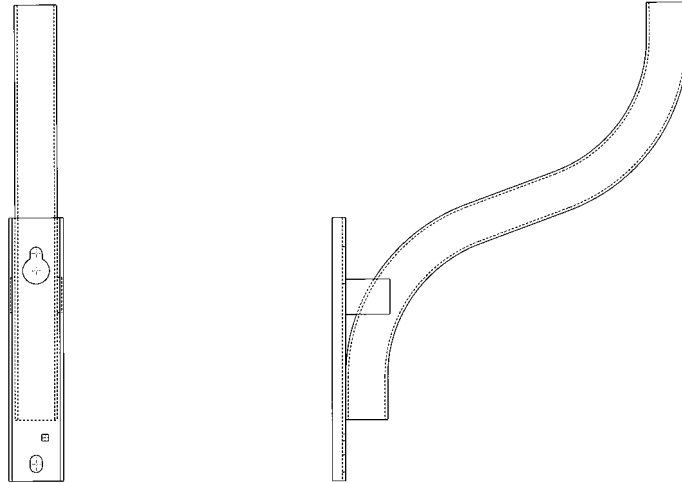
# ALUMINUM BRACKETS



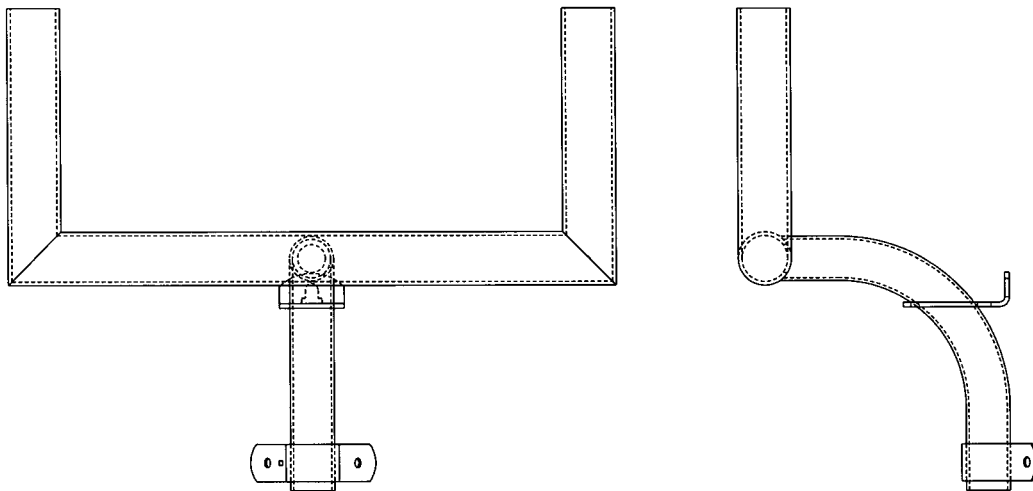
# CUTOUT / ARRESTOR BRACKETS



### SINGLE FLOOD BRACKETS W/ UNIVERSAL BASE

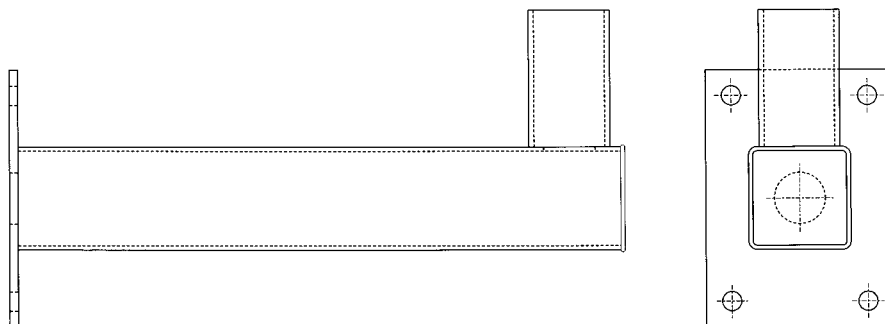


### DOUBLE FLOOD BRACKETS W/ 2-7/8" OD TENONS FOR WOOD POLES

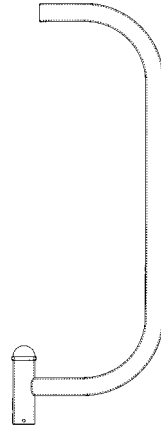


### SIDE MOUNT BRACKETS

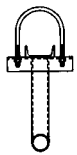
### FOR SQUARE POLES OR WALL MOUNTING



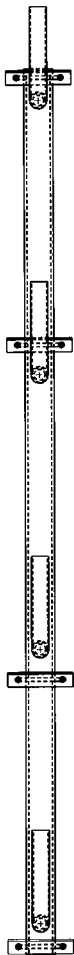
# TENON MOUNT BRACKETS



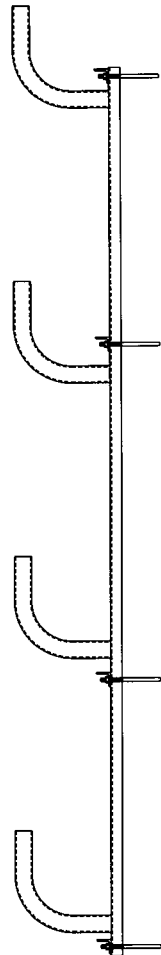
# U-BOLT MOUNTING BRACKETS



TOP VIEW

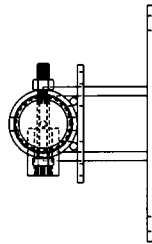


FRONT VIEW

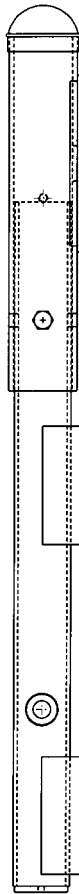


SIDE VIEW

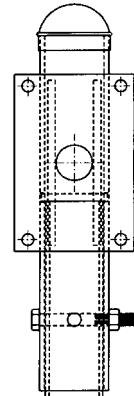
# SWIVEL WALL MOUNT BRACKETS



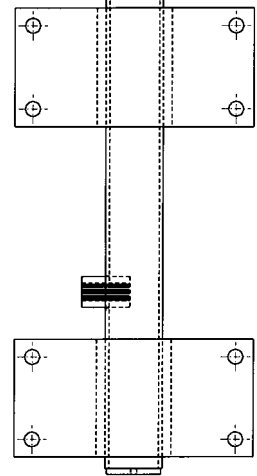
TOP VIEW



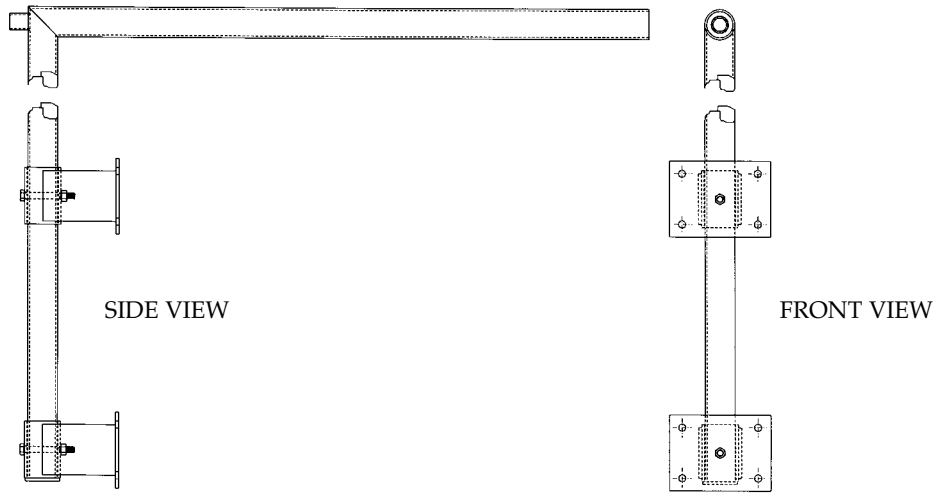
SIDE VIEW



FRONT VIEW

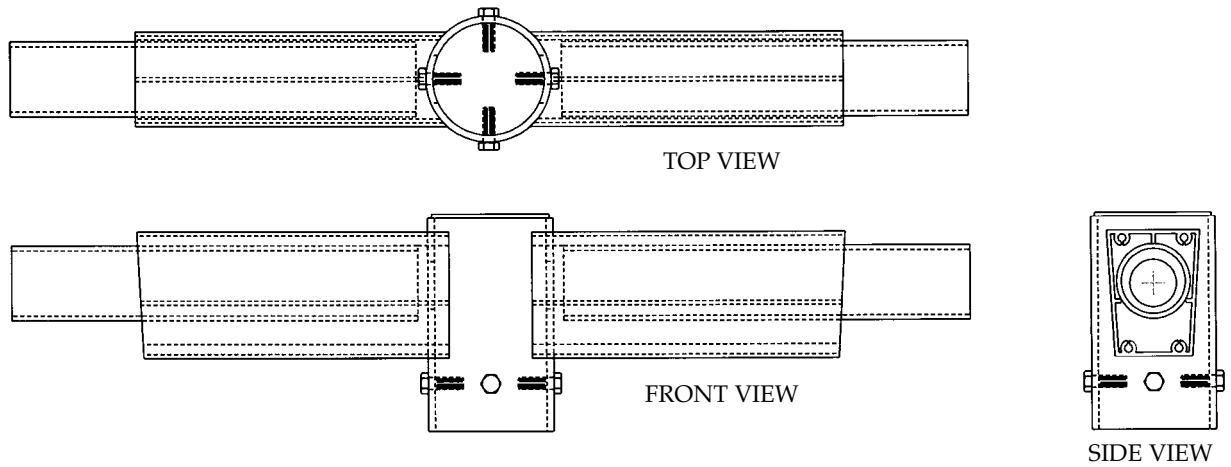


# RIGHT ANGLE SWIVEL ARM BRACKETS

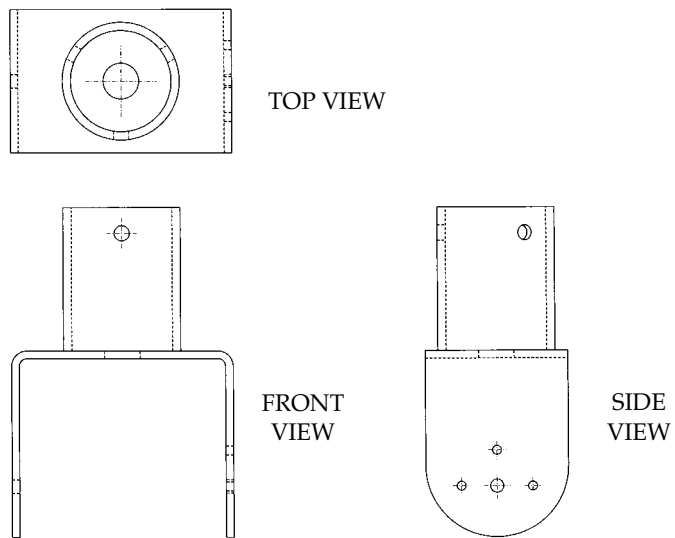


# ALUMINUM MOUNT BRACKETS

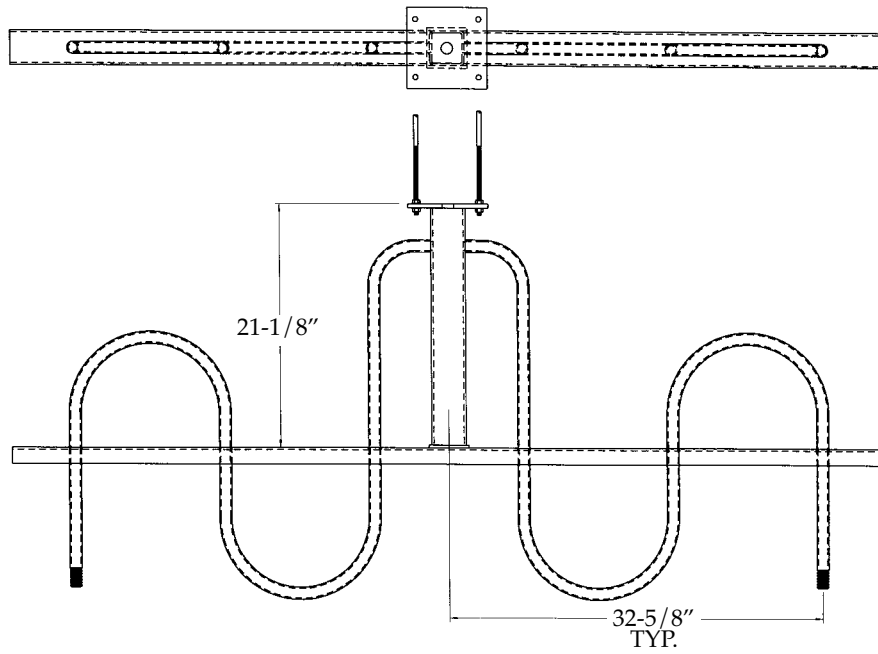
# SINGLE OR DOUBLE ARM



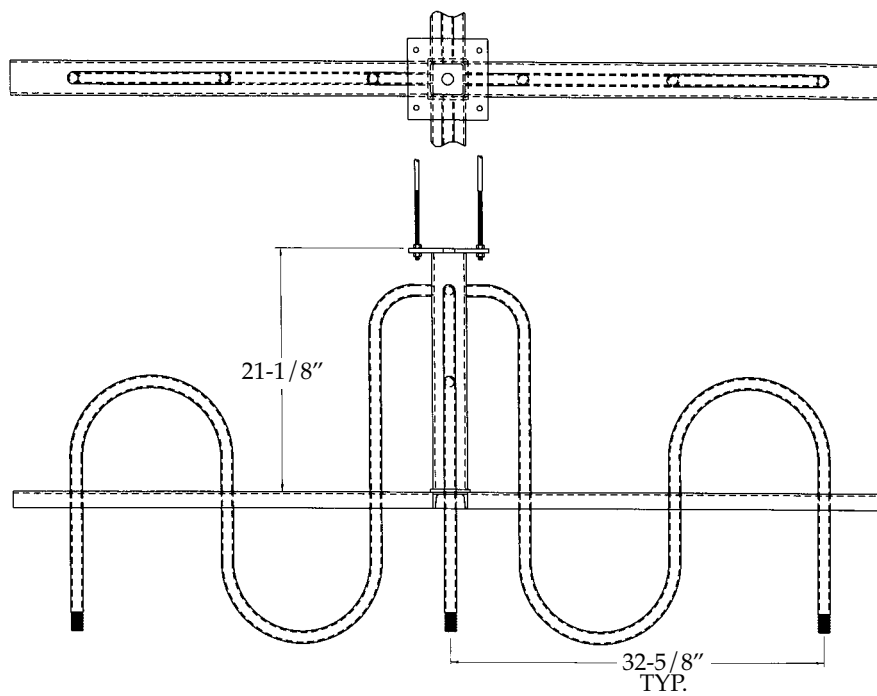
# SWIVEL WALL MOUNT BRACKETS



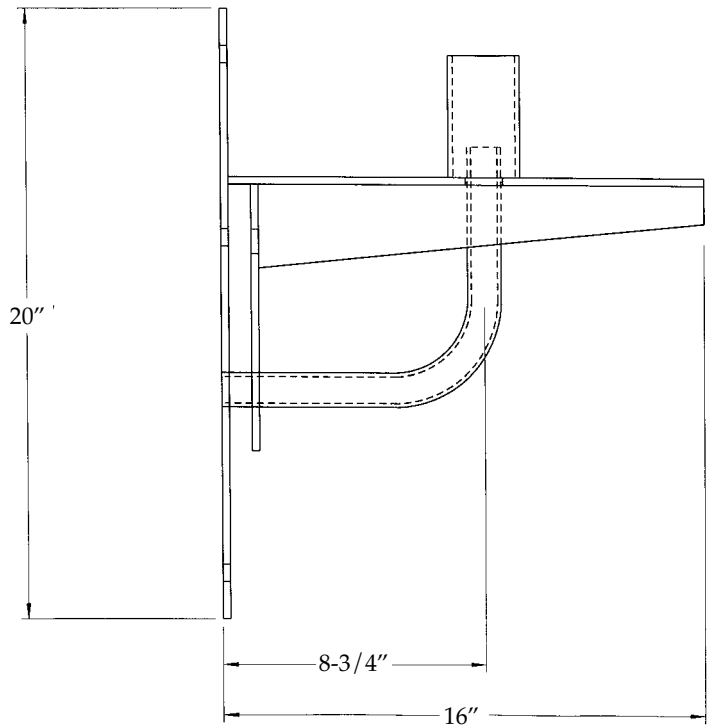
# CHANDELIER BRACKET - TWO LIGHT



# CHANDELIER BRACKET - FOUR LIGHT

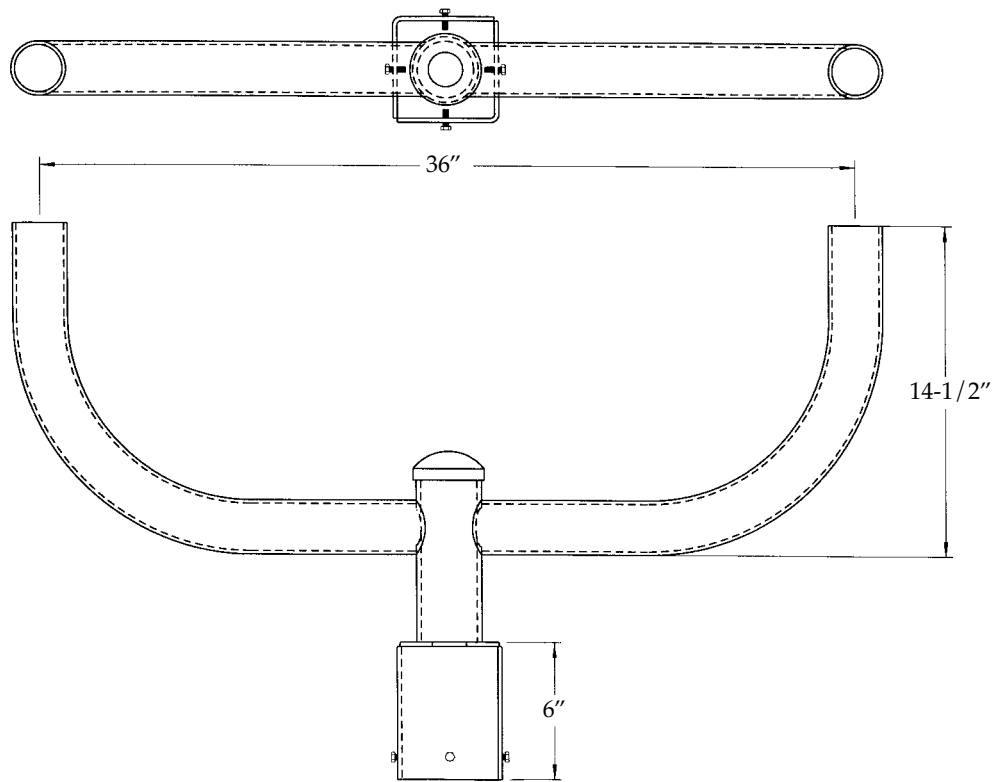


# DECORATIVE FLOOD LIGHT BRACKETS

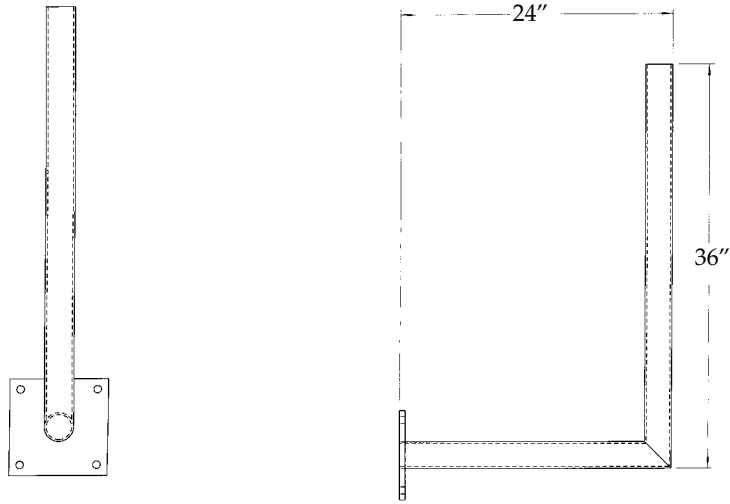


# BULLHORN BRACKETS

# FOR SQUARE CONCRETE POLES

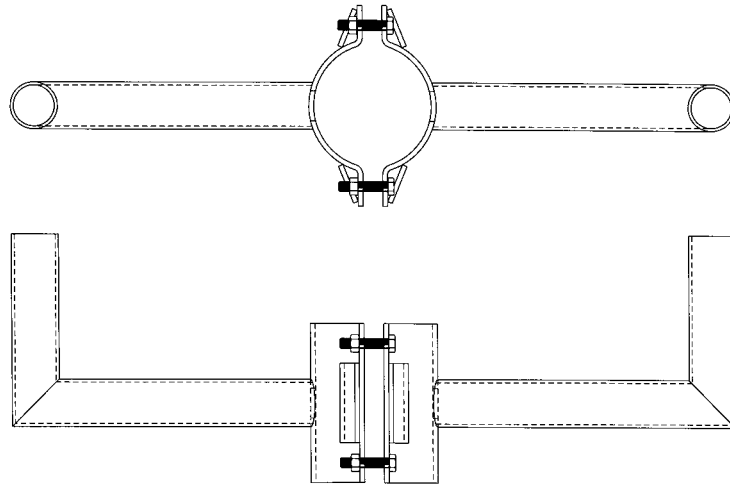


# RIGHT ANGLE BRACKETS



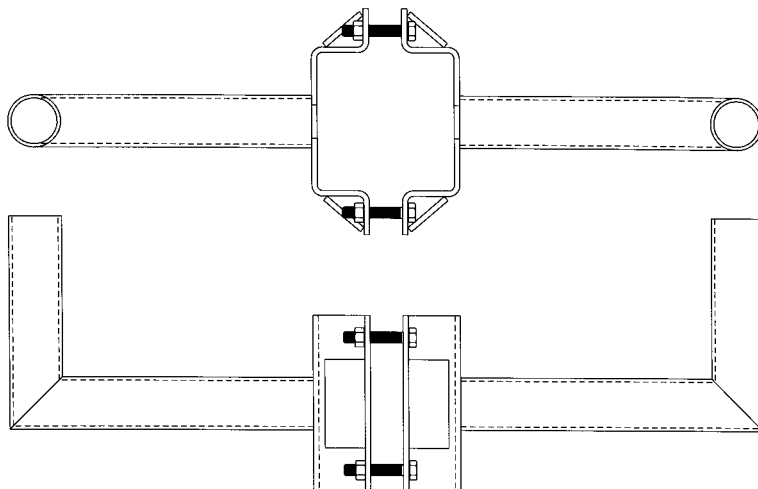
# RIGHT ANGLE BRACKETS

## FOR ROUND POLES

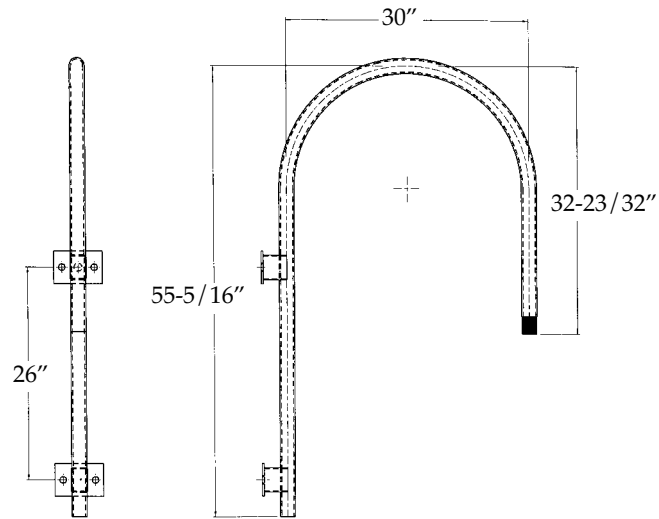


# RIGHT ANGLE BRACKETS

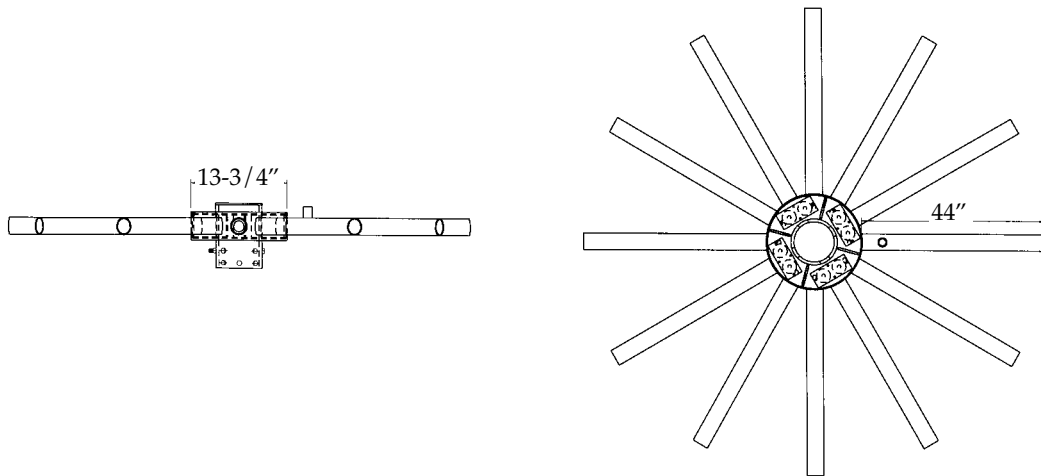
## FOR SQUARE POLES



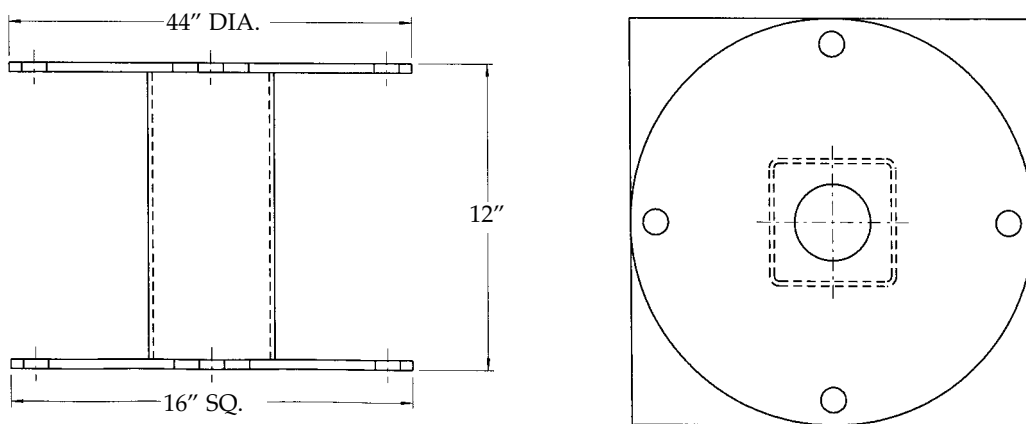
# SINGLE BISHOP'S CROOK BRACKETS



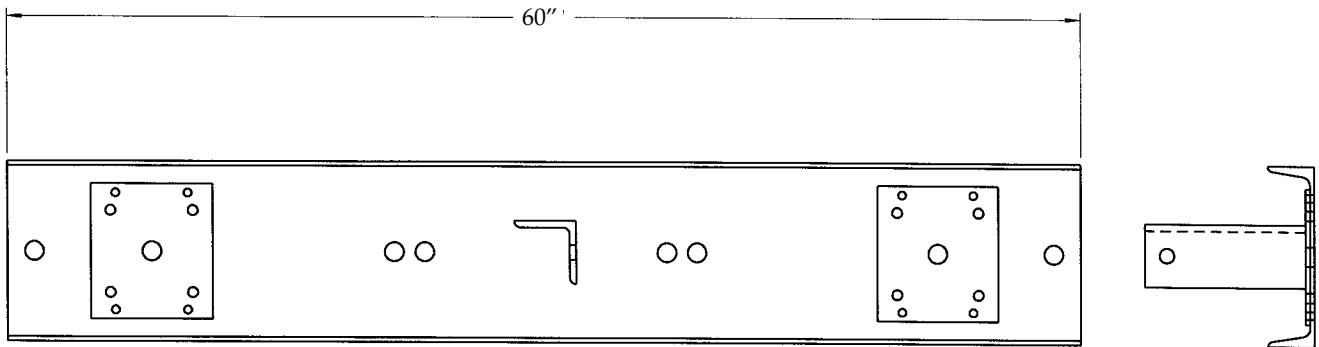
# MULTI-ARM SPOKE BRACKETS



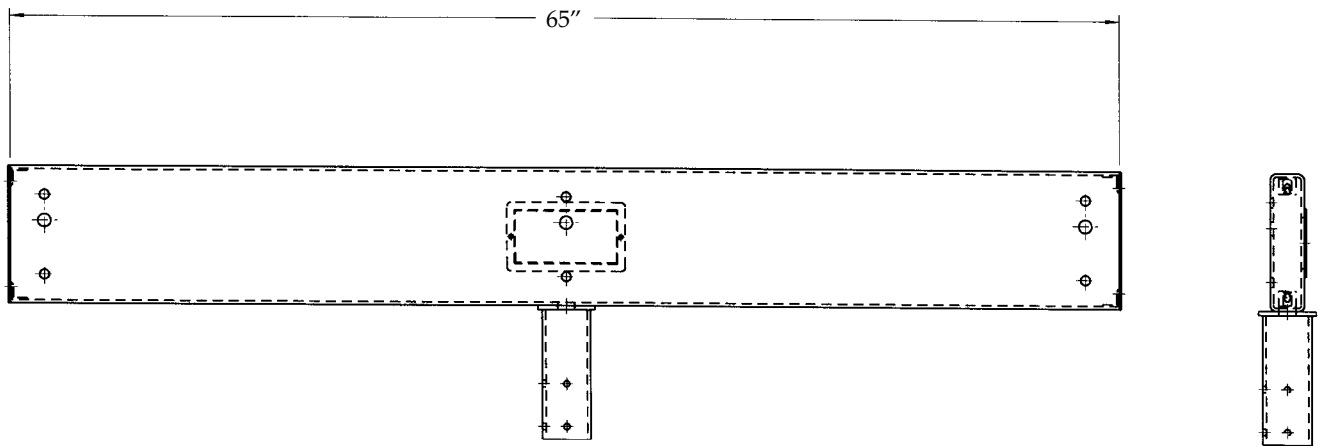
# BASE EXTENDERS



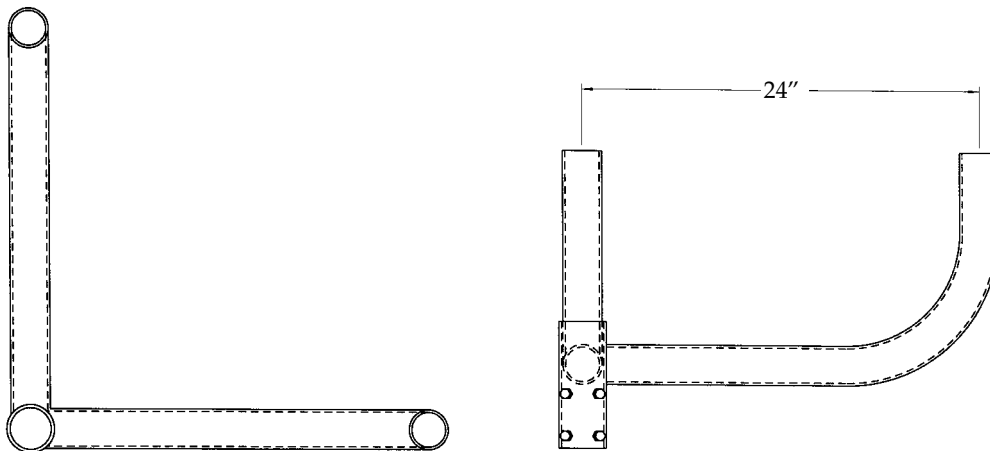
### SPECIAL MOUNTING CHANNELS



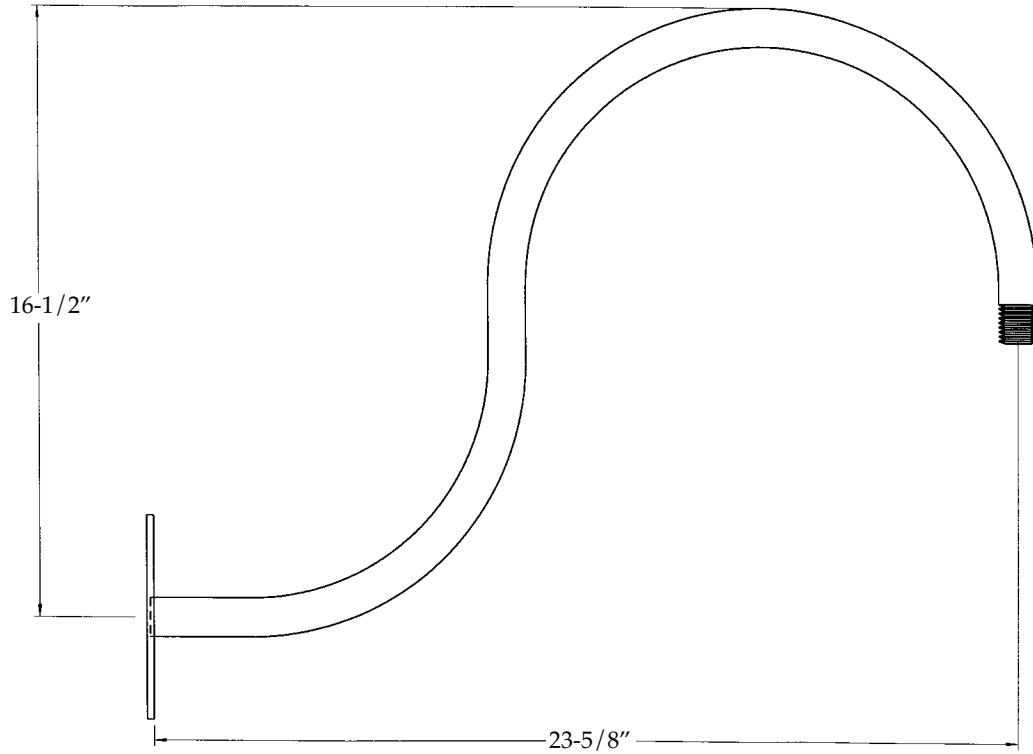
### SPECIAL 3 LIGHT TENON MOUNT BRACKET



### 2 @ 90° BULLHORN BRACKET

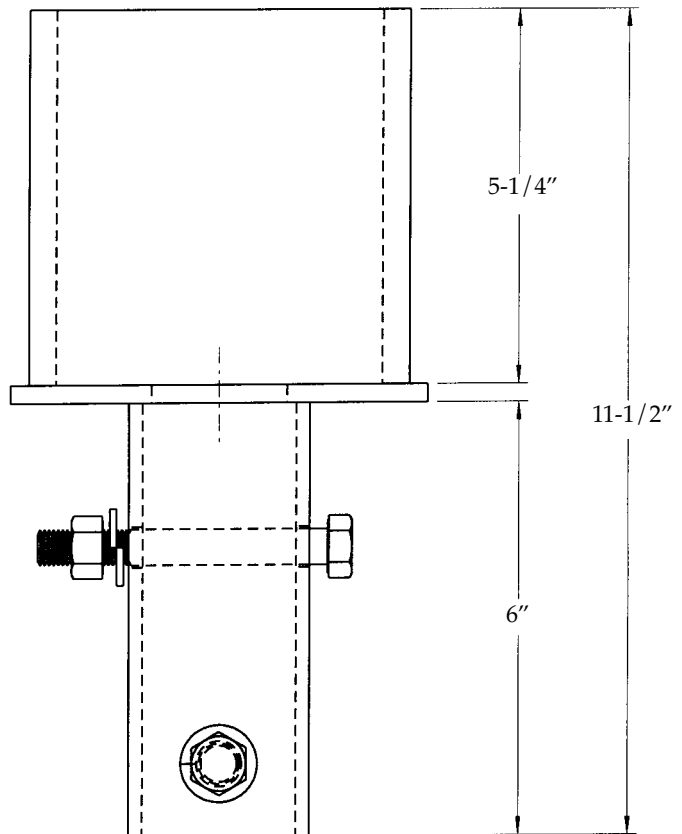
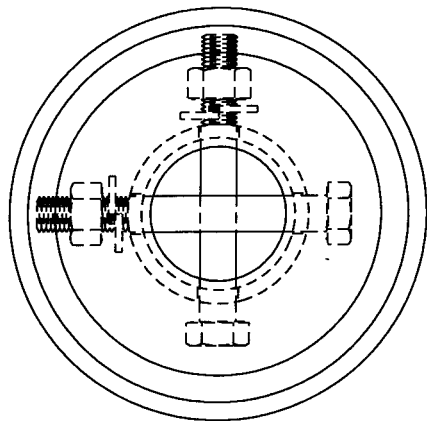


# GOOSENECK BRACKETS



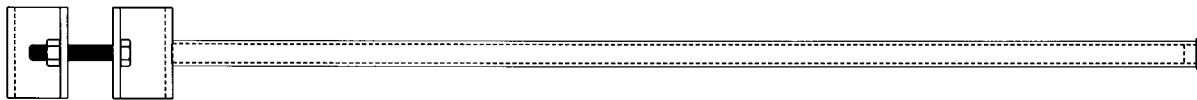
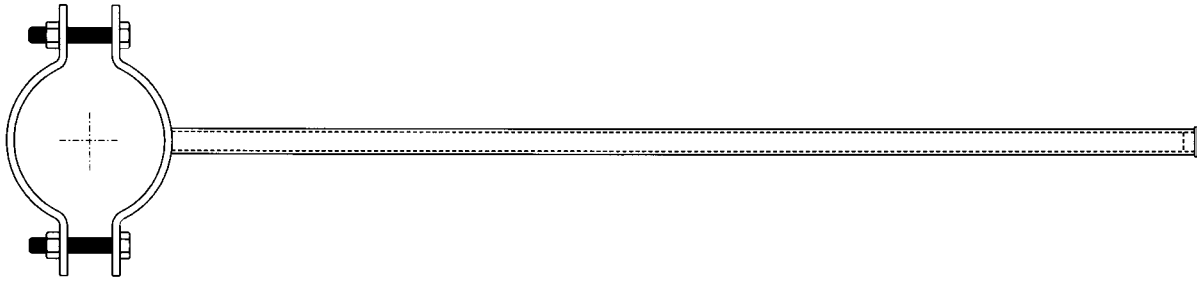
# SPECIAL TENON ADAPTERS

# FOR SQUARE AND ROUND POLES

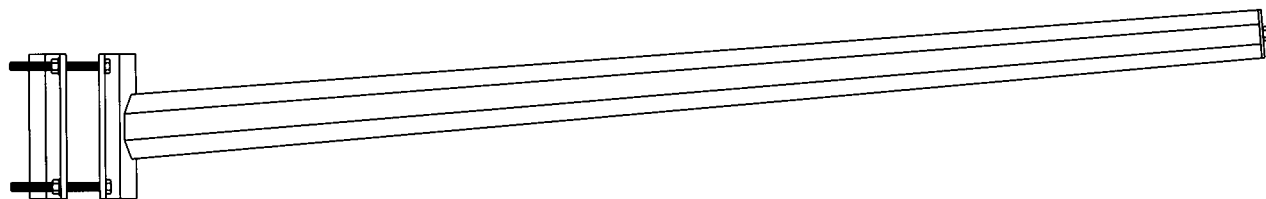
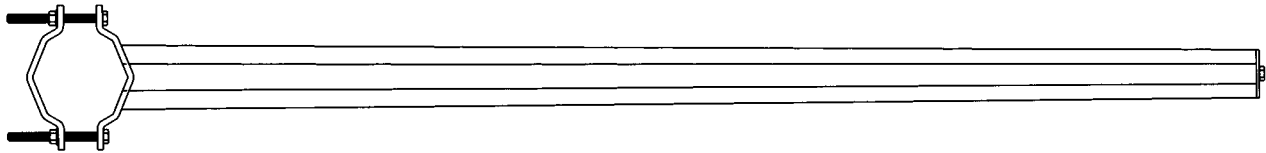


# BANNER BRACKETS

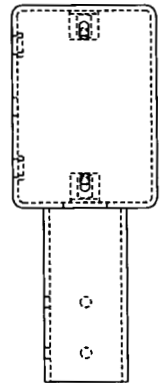
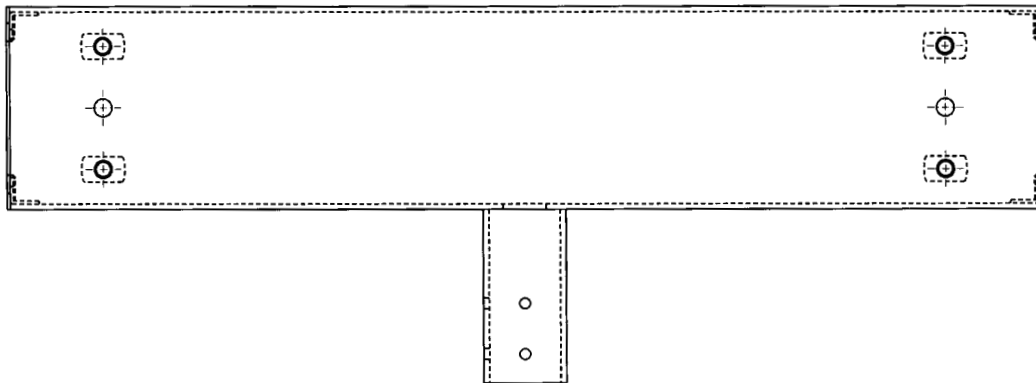
## FOR SQUARE OR ROUND POLES



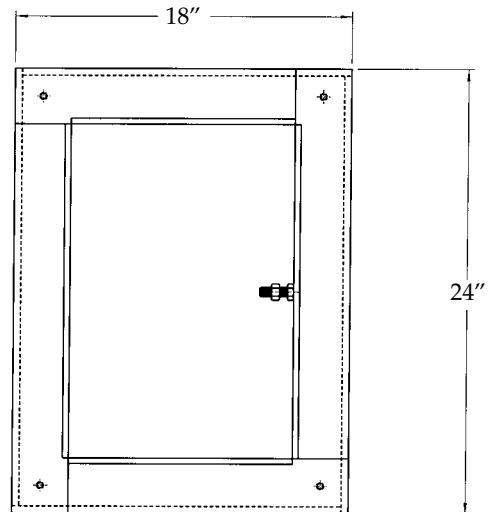
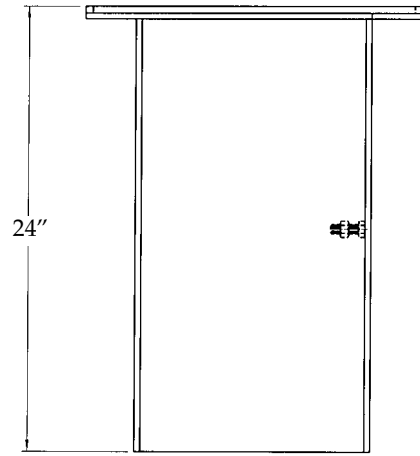
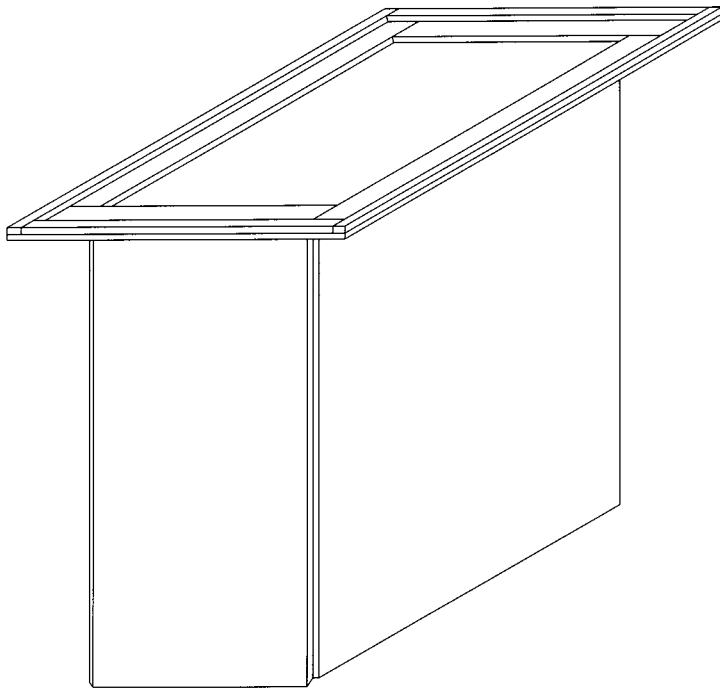
# OCTAGONAL ARMS



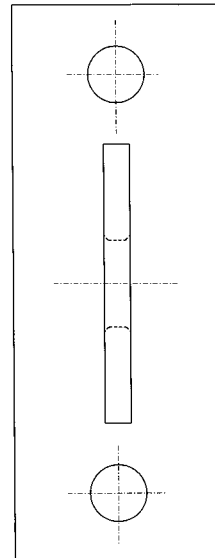
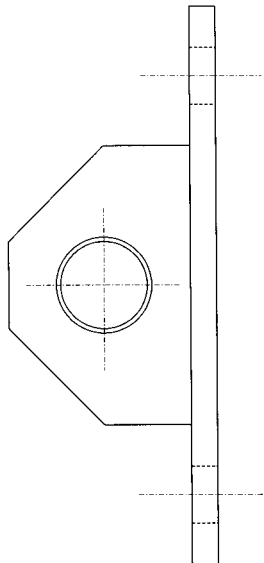
# TENON MOUNT BRACKETS



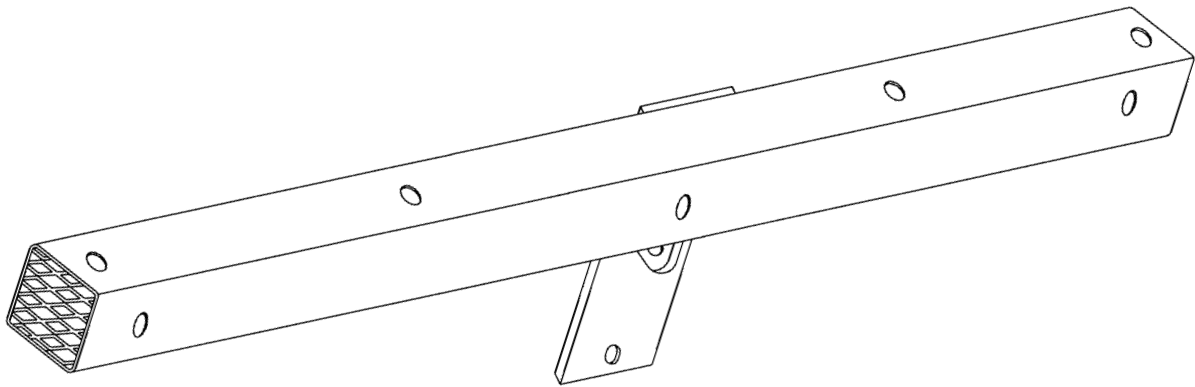
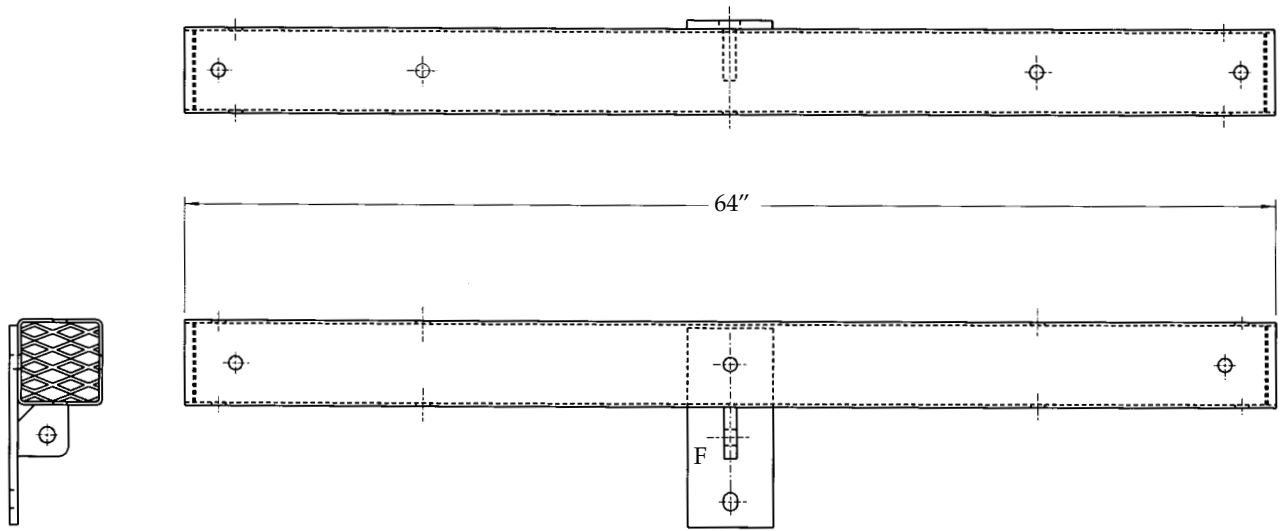
# JUNCTION BOXES



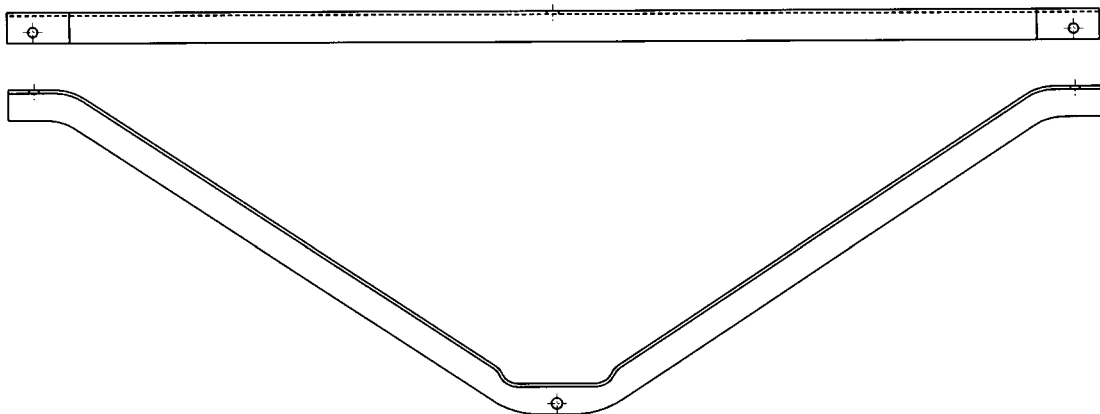
# DEAD END TEES



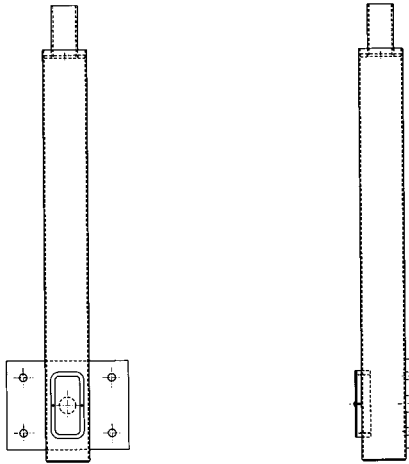
# DISTRIBUTION CROSSARMS



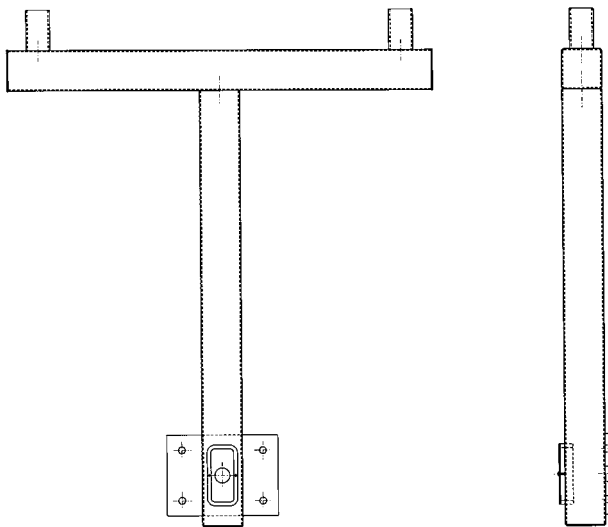
# CROSSARM ANGLE BRACKET



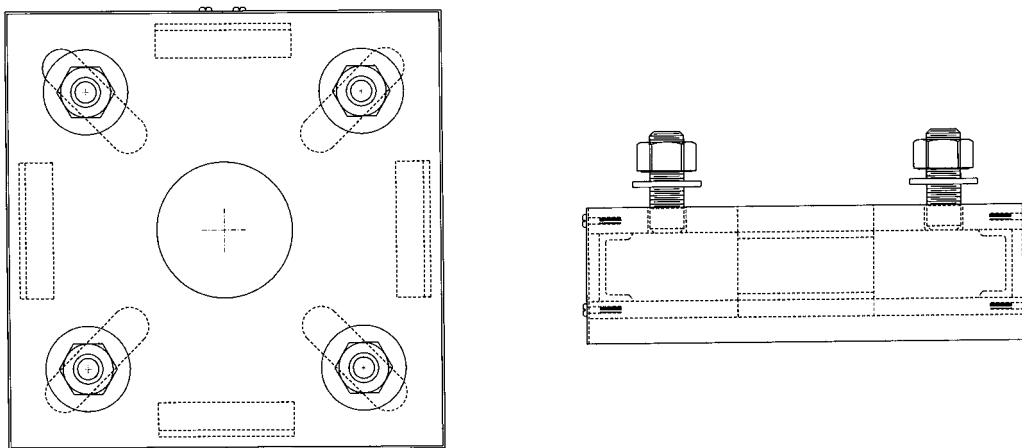
### SINGLE TENON WALL MOUNT POLES



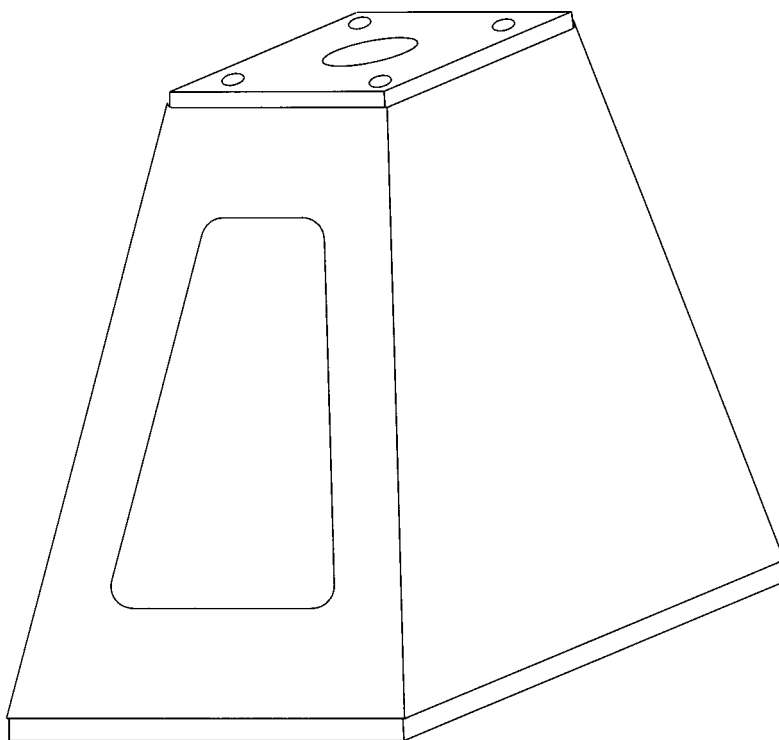
### DOUBLE TENON WALL MOUNT POLES



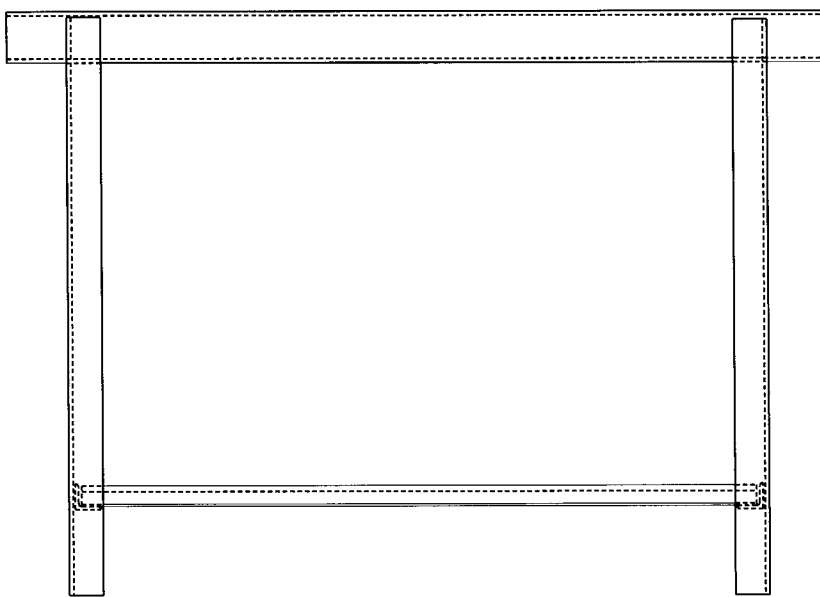
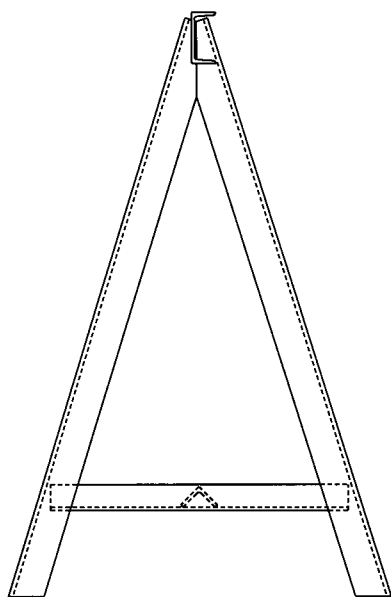
### BASE PLATE ADAPTERS FOR POLES



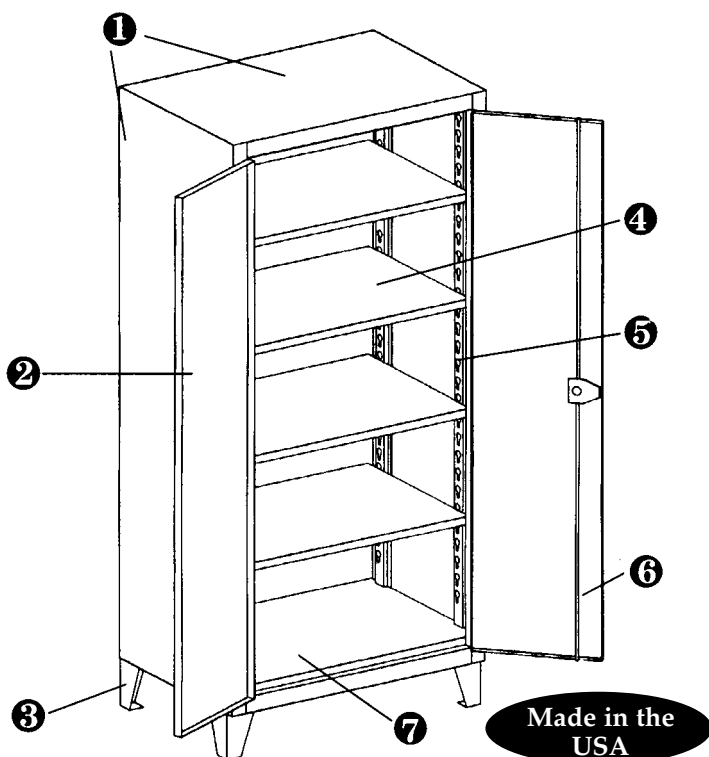
## STEEL TRANSFORMER BASES



## STEEL HORSE STANDS



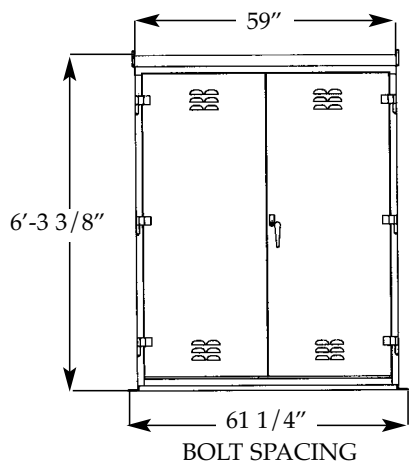
## INDUSTRIAL CABINETS



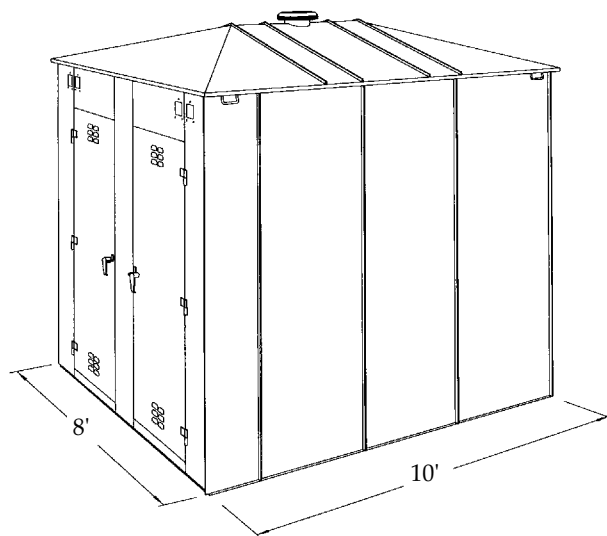
- 1 Wrap around design, one piece body, 12-gauge steel.
- 2 Two doors per cabinet, 12-gauge steel, 1" return flange, 200 degree swing, interlocking left hand door.
- 3 3/16" steel legs, provision for lagging, 6" sweep space.
- 4 Adjustable shelves, 14-gauge steel. Shelf clearance is 2-1/2" less than actual depth of cabinet.
- 5 Shelves attached with 3/8" carriage bolts.
- 6 Three-point locking device, 3/8" latch rod, 3/16" latch plate.
- 7 Flush bottom - 12-gauge steel.
- 8 Cast aluminum-bronze alloy handle, padlock tang, 3/8" angle receiver.
- 9 8-gauge hinge leaf, 5/16" brass hinge pin.

MODEL	WIDTH	DEPTH	HEIGHT	O.A. HEIGHT	SHELVES	SHELF P/N	SHELF CAPACITY	WEIGHT
◆ 36-244	36"	24"	72"	78"	4	3-24C	1900	475
◆ 46-244	48"	24"	72"	78"	4	4-24C	1200	573
◆ 56-244	60"	24"	72"	78"	4	5-24C	1650	699
◆ Denotes stock item - most ship in 48 hours								

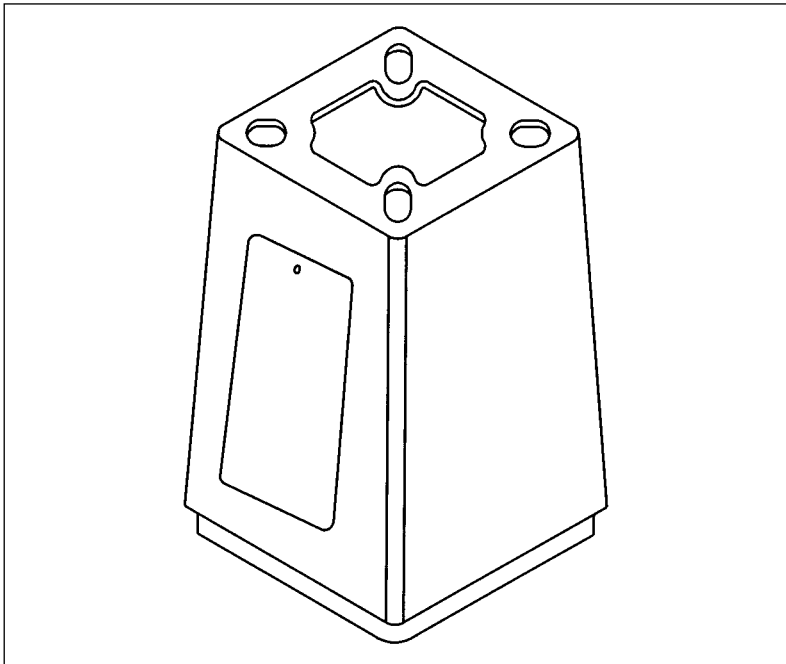
## INSTRUMENT CASES



## INSTRUMENT HOUSES



## AKRON FOUNDRY TRANSFORMER BASE



- Door supplied in aluminum or plastic with or without hinge
- Standard 1/4"-20 SS hex screw or vandal screw to fit your specifications
- All washers to be zinc mechanical coated per ASTM B 695-85 Class 50
- 356 T-6 Aluminum Alloy/SS wheelabrated finish
- Chemical and physical certifications to be supplied with each shipment
- Adhesive breakaway and caution labels to appear on inside wall opposite door opening
- "H" after part number when a hinge door application is required
- "M" after part number denotes modification

### ALUMINUM

CATALOG NO.	BASE HT.	TOP SQ.	BOTTOM SQ.	TOP BOLT CIRCLE	BOTTOM BOLT CIRCLE	DOOR SIZE
◆ TB1-17	17"	13-1/8"	15-3/8"	10-1/2"-13-1/2"	13"-15"	9-1/4" x 9-3/4" x 11-3/4"
TB1-17M	17"	13-1/8"	15-3/8"	10-1/2"-13-1/2"	10-1/2"-12-15/16"	9-1/4" x 9-3/4" x 11-3/4"
◆ TB2-17	17"	12"	13"	10"-12"	10"-12"	9-1/4" x 9-3/4" x 11-3/4"
◆ TB3-17	17"	15-3/32"	17-7/16"	13"-15-1/8"	15"-17-1/4"	9-1/4" x 9-3/4" x 11-3/4"
TB1-20	20"	13-1/8"	15-3/8"	11"-13"	13"-15"	9-1/4" x 9-3/4" x 13-1/2"
TB1-20M	20"	13-1/8"	15-3/8"	11"-13"	10-1/2"-12-15/16"	9-1/4" x 9-3/4" x 13-1/2"
TB2-20	20"	12-1/16"	13"	10"-12"	10"-12"	9-1/4" x 9-3/4" x 13-1/2"
TB3-20	20"	15"	17-7/16"	13"-15 1/8"	15"-17-1/4"	9-1/4" x 9-3/4" x 13-1/2"

### JOB BOX



- 12-gauge steel, all-welded construction
- Removable 14-gauge shelves, concealed hinges, lifting handles
- Three-point locking system designed for a padlock
- Raised bottom for easy pickup with forklift
- Pre-punched holes for optional casters

CATALOG NO.	WIDTH	DEPTH	HEIGHT	SHELVES	SHELF CAPACITY	WEIGHT
◆453-UJB	60"	36"	48"	3	800	602
◆ indicates stock item (in limited quantity)						

## OUR MISSION...

*Utility Metals, an established company since 1955, manufactures and fabricates products primarily for the outdoor lighting market.*

*Utility Metals is committed to operating profitably based on fair and competitively priced products.*

*Utility Metals is dedicated to excellence in the industry, by being more efficient than our competition, and by providing the highest quality products through the assurance of a documented quality program.*

*Utility Metals is dedicated to customer satisfaction: fulfilling the needs of the*

*customer on a timely basis and building relationships through value added service.*

*Utility Metals is a responsible community partner and encourages employee involvement.*

*Utility Metals is committed to providing an environment for its employees that includes*

*respect, training, development, and fulfillment, in order to achieve job satisfaction and a high level of productivity.*

*Utility Metals is committed to being a leader in the outdoor lighting market, and to the exploration of new markets for growth opportunities.*

## UTILITY METALS AT A GLANCE...



- Manufacturer of outdoor lighting products since 1955
- Steel and aluminum mast arms, brackets, and pole accessories
- Square, round, and round tapered steel area lighting poles
- Powder coat, hot dip galvanized, acrylic paint, and primer finishes
- Custom fabrication
- Substantial inventory maintained for immediate shipment
- Customers include OEMs, utilities, distributors, and contractors
- Distributors for Akron Foundry transformer bases

## QUALITY ASSURANCE...

Utility Metals' success through time has demonstrated a strong customer commitment.

We have taken that commitment a step further by providing our customers with the

assurance of a documented quality program; created along the guidelines of ISO 9001.

We are driven to exceed our customers' needs through

exceptional service and on-time deliveries. A continuous effort is made to seek innovative ways of providing the highest quality products in the most cost effective manner.



## MEMBERS...

*As a further commitment to and our support for the lighting and electrical industry, Utility Metals is proud to be a member of the following associations:*



# TERMS AND CONDITIONS

## WARRANTY

Utility Metals warrants all goods of our manufacture to be free from defects in material and workmanship under normal use and service. Any goods found to be defective, upon examination by us, within 12 months from date of shipment, shall be repaired or replaced by us without charge, FOB factory within the continental United States. All export taxes, fees and duties occurring from warranty shipments beyond the continental United States will be the customer's responsibility.

This warranty shall be null and void and of no effect unless we are notified of such defect, all within 12 months from date of shipment. Such notification shall be directed to the office of Utility Metals. No goods shall be returned without prior written approval.

Explicitly excluded from this warranty are: special finishes and labor required to remove and/or reinstall original or replacement parts.

This warranty does not cover damage caused by improper installation, overloading, accident, improper storage, or neglect, alterations, modifications, or additions.

Utility Metals warrants the items purchased from other manufacturers only to the extent of the normal warranty of these manufacturers.

The above warranties are given in lieu of all other warranties express or implied, including without limitation, the warranty of merchantability and the warranty of suitability for a particular purpose. It is expressly agreed that Utility Metals assumes no liability for liquidated damages arising out of a breach of contract, including any warranties arising therefrom, and buyer's remedy shall be limited to repair or replacement of defective parts as described above.

## QUOTATIONS

Prices quoted are subject to receipt and acceptance of order within 30 days of the date of the quotation unless otherwise noted on quote.

## TAXES

Utility Metals reserves the right to add sales tax, or any other tax, which may be imposed on our products, as required by law. All shipments into the State of Kentucky will carry the current state sales tax unless a resale certificate for the State of Kentucky is on file at Utility Metals.

## TERMS OF PAYMENT

Payment terms are net 30 days to established customers. New customers must furnish credit references before credit can be issued. A credit line will be based on credit reference information received by Utility Metals.

## CANCELLATIONS

Written consent from Utility Metals must be obtained prior to the cancellation of any order. Cancellation charges may apply.

## RETURNED GOODS

Prior written authorization from Utility Metals must be obtained before credit on returned goods will be given. Returns shall be subject to a restocking charge and must be returned to Utility Metals freight "prepaid."

## LOSS OR DAMAGE IN TRANSIT

Utility Metals shall not be liable for loss or damage in transit. The following steps must be taken to ensure proper handling of loss or damage claims:

- 1) Products received freight prepaid must be checked against the packing list to ensure all items were delivered. In case of shortages, note on the carrier's paperwork "Shipment Received Short." If shortage is not discovered upon receipt from carrier, Utility Metals must be notified of shortages within 24 hours of receipt to ensure a claim for loss can be filed. Shortages reported later than 24 hours carry no guarantee of replacement/credit.
- 2) Products received freight prepaid must be checked for damage upon receipt. In the case of damage observed upon delivery, note on carrier's paperwork "Received with Damage." Contact Utility Metals immediately. In the case of concealed damage, Utility Metals must be notified within 24 hours of receipt in order to report concealed damage to the carrier. Failure to report concealed damage within 24 hours may result in loss of repair costs/replacement of product.
- 3) Products received freight collect must be checked for damage upon receipt. In case of damage observed upon delivery, note on carrier's paperwork "Received with Damage," Utility Metals will not be responsible for any damage or loss on collect shipments. Freight claims rest solely with the consignee.

## DELIVERIES

Delivery dates are estimated dates only, and unless otherwise specified, are estimated from the date of receipt by Utility Metals of purchase order, complete technical data and approved drawings.

In estimating such dates, no allowance will be made, nor shall we be liable directly or indirectly, for delays of carriers or delays from labor difficulties, shortages, strikes or stoppages of any sort, fires, accidents, failure or delay in obtaining materials or manufacturing facilities, acts of government affecting us directly or indirectly, bad weather or any causes beyond our control or causes designated as Acts of God or forces of nature by any court of law, and the estimated delivery dates shall be extended accordingly. We will not be liable for any damages or penalties, whatsoever, whether direct, indirect, special or consequential, resulting from our failure to perform or delay in performing unless otherwise agreed in writing by an authorized officer of Utility Metals.

FOR SPECIAL DESIGNS AND/OR APPLICATIONS NOT SHOWN IN OUR CATALOGS, PLEASE CONSULT UTILITY METALS.



## **Utility Metals**

P.O. Box 9054  
Louisville, Ky 40209

800-627-8276

502-363-6681

502-368-2656 FAX

[www.utilitymetals.com](http://www.utilitymetals.com)

*A division of  
Fabricated Metals LLC*



P.O. Box 9054 • Louisville, Ky 40209  
800-627-8276 • 502-363-6681 • 502-368-2656 FAX  
[www.utilitymetals.com](http://www.utilitymetals.com)

*A division of Fabricated Metals LLC*