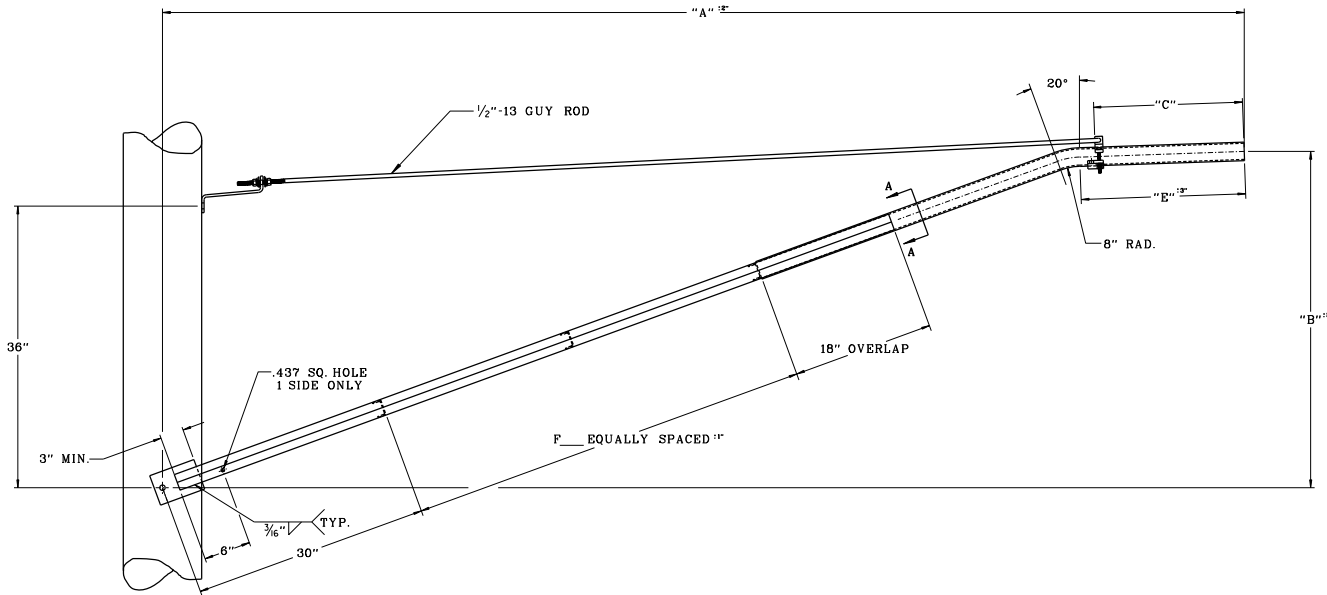
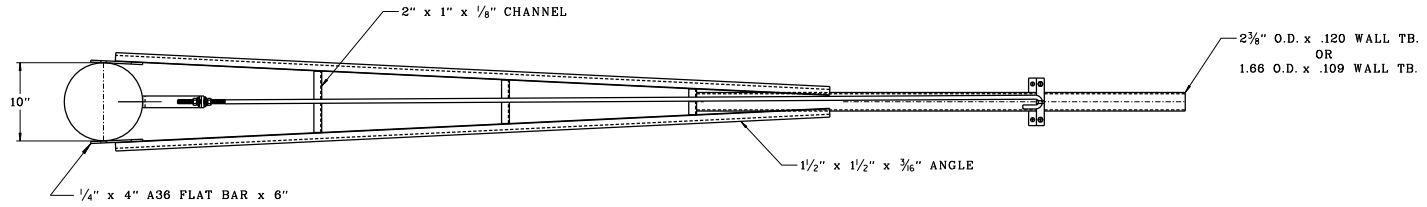
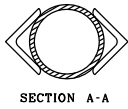


PART*	A	B	C	D	E
A125S080	90"	30"	11"		15"
A200S080	90"	30"	11"		15"
A125S100	114"	35"	14"		18"
A200S100	114"	35"	14"		18"
A125S120	138"	43"	17"	36"	21"
A200S120	138"	43"	17"	36"	21"



SHT. 2 OF 2

REF. DWG. H-3896-09

REV.	DATE	DESCRIPTION	BY

TOLERANCES UNLESS OTHERWISE SPECIFIED FRACTIONS : 1/16" DECIMALS : 0.001" ANGLES : 1 DEG.	THIS DRAWING AND ALL ACCOMPANYING DATA CONTAINED HEREON IS THE PROPERTY OF FABRICATED METALS CORP. INFORMATION AND IS RELEASED AS APPLICABLE. UNLESS OTHERWISE SPECIFIED, ALL DIMENSIONS SHALL BE TO THE CENTERLINE OF THE MEMBER UNLESS OTHERWISE SPECIFIED BY DIMENSIONS OR DIMENSIONAL TOLERANCES. DIMENSIONS SHALL BE TO THE CENTERLINE OF THE MEMBER UNLESS OTHERWISE SPECIFIED BY DIMENSIONS OR DIMENSIONAL TOLERANCES. DIMENSIONS SHALL BE TO THE CENTERLINE OF THE MEMBER UNLESS OTHERWISE SPECIFIED BY DIMENSIONS OR DIMENSIONAL TOLERANCES.	UTILITY METALS DIV. OF FABRICATED METALS CORP. P.O. BOX 9054 LOUISVILLE KY. 40209-9054 PH: (502) 263-8551 TOLL FREE (800) 827-8278 FAX (502) 368-2856	JOB: A-FRAME BKTS. 8', 10' & 12' APPROVED: P.D. DWN: P.A.D. DATE: 10-21-13 SCALE: 1/8" = 1" DWG: 1-7059-0
---	---	--	---