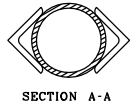
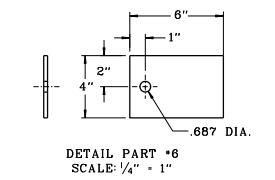
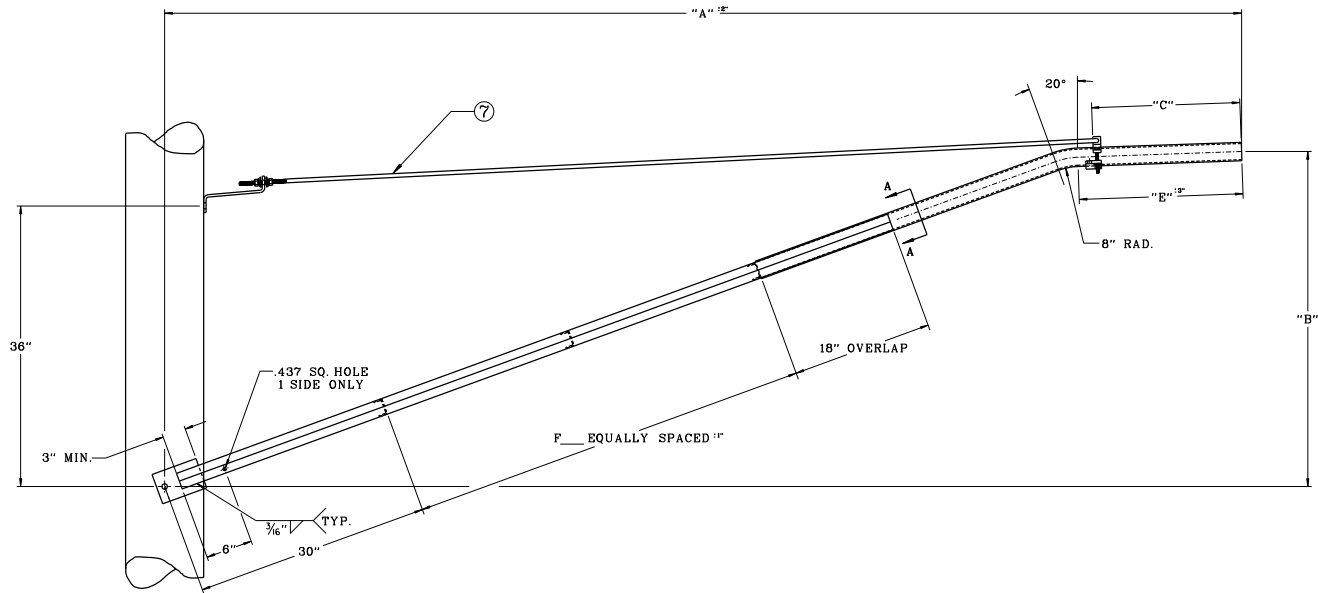
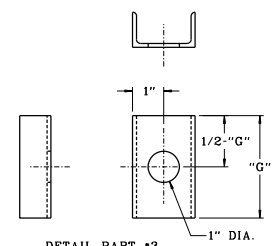
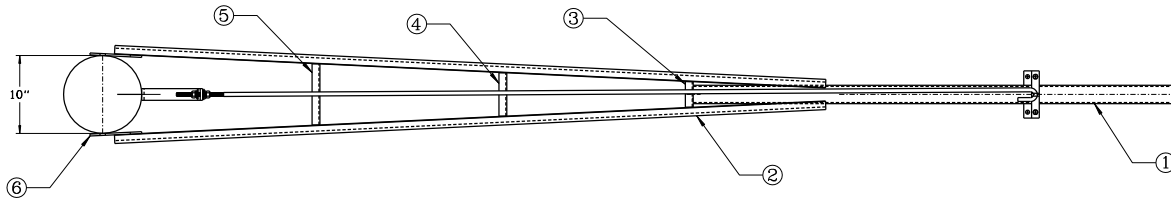


PART*	A	B	C	D	E	F	G	H	J	ASSY.
A125S080	90"	30"	11"		15"	2	2 5/8"	5 7/8"		1
A200S080	90"	30"	11"		15"	2				1
A125S100	114"	35"	14"		18"	1				2
A200S100	114"	35"	14"		18"	1	3 1/4"	4 1/4"	8 1/2"	2
A125S120	138"	43"	17"	36"	21"	2	1 1/2"	3 1/4"	5 1/4"	3
A200S120	138"	43"	17"	36"	21"	2	3 1/4"	5 3/8"	7 1/2"	3



BILL OF MATERIAL										
EXT. COST	UNIT COST	VENDOR	P.O. #	ITEM	WGT.	ASSY.	DESCRIPTION	QTY.	REV.	
				1	7.1	1	1.66 O.D. x .109 W. TUBE x 40 1/2"	1	----	
				1	10.2	1	2 3/8" O.D. x .120 W. TUBE x 40 1/2"	1	----	
				1	9.4	2	1.66 O.D. x .109 W. TUBE x 53 1/2"	1	----	
				1	13.4	2	2 3/8" x .120 W. TUBE x 53 1/2"	1	----	
				1	11.6	3	1.66 O.D. x .109 W. TUBE x 66 1/2"	1	----	
				1	16.7	3	2 3/8" O.D. x .120 W. TUBE x 66 1/2"	1	----	
				2	21.6	1	1 1/2" x 1 1/2" x 3/8" A36 ANGLE x 72"	2	2	
				2	25.4	2	1 1/2" x 1 1/2" x 3/8" A36 ANGLE x 84 1/2"	2	2	
				2	29.2	3	1 1/2" x 1 1/2" x 3/8" A36 ANGLE x 97"	2	2	
				3		ALL	2" x 1" x 1/8" A36 CHANNEL x G CENTER BRACE	1	1	
				4		ALL	2" x 1" x 1/8" A36 CHANNEL x H CENTER BRACE	1	1	
				5		2,3	2" x 1" x 1/8" A36 CHANNEL x J CENTER BRACE	1	1	
				6	3.4	ALL	1/4" x 4" A36 FLAT BAR x 6"	2	2	
				7	7.2	1	1/2"-13 GUY ROD x	TAKE FROM STOCK (HGD.)	1	1
				7		2	1/2"-13 GUY ROD x	TAKE FROM STOCK (HGD.)	1	1
				7		3	1/2"-13 GUY ROD x 117"	TAKE FROM STOCK (HGD.)	1	1
				8	5	ALL	CHB1.25S-5 IS HARDWARE BAG	TAKE FROM STOCK (HGD.)	1	----
				8	5	ALL	CHB2S-.52S HARDWARE BAG	TAKE FROM STOCK (HGD.)	----	1



S.O. _____
 QTY. _____
 FINISH _____

REF. DWG. H-3896-09

REV.	DATE	DESCRIPTION	BY
1		UTILITY METALS	
2		A DIV. OF FABRICATED METALS CORP.	
3		LOUISVILLE KY. 40209-9054	
4		PHONE 502/363-5681	
5		TOLL FREE 800/857-8278	
6		FAX 502/365-2856	